



[Go to Product page](#)

Datasheet for ABIN1848474  
**anti-COL2 antibody (N-Term)**

4 Images

Overview

Quantity:	100 µL
Target:	COL2
Binding Specificity:	N-Term
Reactivity:	Human, Mouse, Rat
Host:	Rabbit
Clonality:	Polyclonal
Conjugate:	This COL2 antibody is un-conjugated
Application:	Western Blotting (WB), ELISA, Immunohistochemistry (IHC), Immunofluorescence (fixed cells) (IF/ICC)

Product Details

Immunogen:	The antiserum was produced against synthesized peptide derived from N-terminal of human Collagen II.
Specificity:	Rabbit polyclonal antibody against Collagen II protein.
Purification:	The antibody was affinity-purified from rabbit antiserum by affinity-chromatography using epitope-specific immunogen

Target Details

Target:	COL2
Alternative Name:	Collagen II ( <a href="#">COL2 Products</a> )
UniProt:	<a href="#">P02458</a>

## Application Details

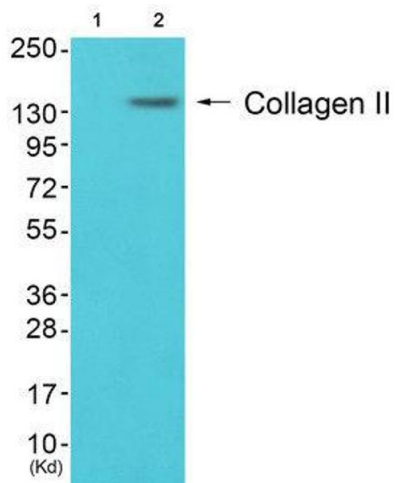
Restrictions: For Research Use only

## Handling

Storage: -20 °C

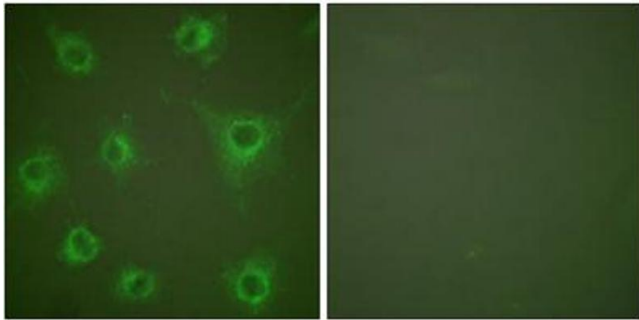
Storage Comment: Aliquot and store at -20 °C. Avoid repeated freeze/thaw cycles.

## Images



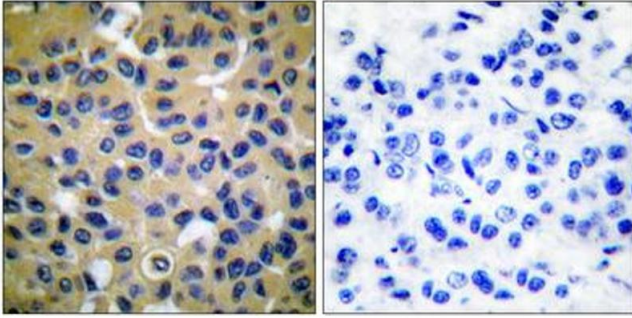
### Western Blotting

Image 1.



### Immunofluorescence

Image 2. Immunofluorescence analysis of COS7 cells, using COL2 antibody (ABIN5976364).



### Immunohistochemistry

**Image 3.** Immunohistochemical analysis of paraffin-embedded human breast carcinoma tissue, using COL2 antibody (ABIN5976364).

Please check the [product details page](#) for more images. Overall 4 images are available for ABIN1848474.