

Datasheet for ABIN184848  
**anti-BRF2 antibody (C-Term)**[Go to Product page](#)

## 1 Image

## Overview

Quantity:	100 µg
Target:	BRF2
Binding Specificity:	C-Term
Reactivity:	Human
Host:	Goat
Clonality:	Polyclonal
Conjugate:	This BRF2 antibody is un-conjugated
Application:	Western Blotting (WB), ELISA

## Product Details

Purpose:	BRF2
Immunogen:	Peptide with sequence C-QAARQAATSVNPP, from the C Terminus of the protein sequence according to NP_060780.2.
Sequence:	QAARQAATSV PNPP
Isotype:	IgG
Cross-Reactivity:	Human
Purification:	Purified from goat serum by ammonium sulphate precipitation followed by antigen affinity chromatography using the immunizing peptide.
Grade:	Verified

## Target Details

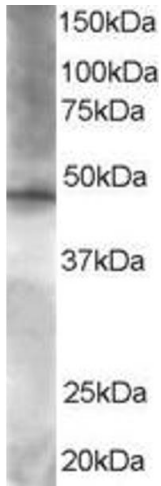
Target:	BRF2
Alternative Name:	BRF2 ( <a href="#">BRF2 Products</a> )
Background:	BRF2, BRF2, subunit of RNA polymerase III transcription initiation factor, BRF1-like, BRFU, FLJ11052, TFIIIB50, transcription factor IIB- related factor, TFIIIB50, RNA polymerase III transcription initiation factor BRFU, RNA polymerase III transcription i
Gene ID:	55290
NCBI Accession:	<a href="#">NP_060780</a>

## Application Details

Application Notes:	Western Blot: Approx 50 kDa band observed in HeLa lysates (predicted MW of 48 kDa according to NP_060780). Recommended for use at 1-3 µg/mL. Peptide ELISA: antibody detection limit dilution 1:16000.
Restrictions:	For Research Use only

## Handling

Format:	Liquid
Concentration:	0.5 mg/mL
Buffer:	Supplied at 0.5 mg/mL in Tris saline, 0.02 % sodium azide, pH 7.3 with 0.5 % bovine serum albumin.
Preservative:	Sodium azide
Precaution of Use:	This product contains Sodium azide: a POISONOUS AND HAZARDOUS SUBSTANCE which should be handled by trained staff only.
Handling Advice:	Minimize freezing and thawing.
Storage:	-20 °C
Storage Comment:	Aliquot and store at -20°C, with minimal freeze/thawing. A working aliquot may be refrigerated at 4°C for a few weeks and still remain viable.



Western Blotting

**Image 1.** ABIN184848 staining (1.5µg/ml) of Hela lysate (RIPA buffer, 35µg total protein per lane). Primary incubated for 1 hour. Detected by chemiluminescence.