

Datasheet for ABIN1848570  
**anti-mGluR2/3 antibody (C-Term)**[Go to Product page](#)

## 2 Images

## Overview

Quantity:	100 µL
Target:	mGluR2/3 (GRIA2/3)
Binding Specificity:	C-Term
Reactivity:	Human, Rat, Mouse
Host:	Rabbit
Clonality:	Polyclonal
Conjugate:	This mGluR2/3 antibody is un-conjugated
Application:	Western Blotting (WB), Immunohistochemistry (IHC), ELISA

## Product Details

Immunogen:	The antiserum was produced against synthesized peptide derived from C-terminal of human GluR2/3.
Specificity:	Rabbit polyclonal antibody against mGluR2/3 protein.
Purification:	The antibody was affinity-purified from rabbit antiserum by affinity-chromatography using epitope-specific immunogen

## Target Details

Target:	mGluR2/3 (GRIA2/3)
Alternative Name:	mGluR2/3 ( <a href="#">GRIA2/3 Products</a> )
UniProt:	<a href="#">Q14416</a> , <a href="#">Q14832</a>

Application Details

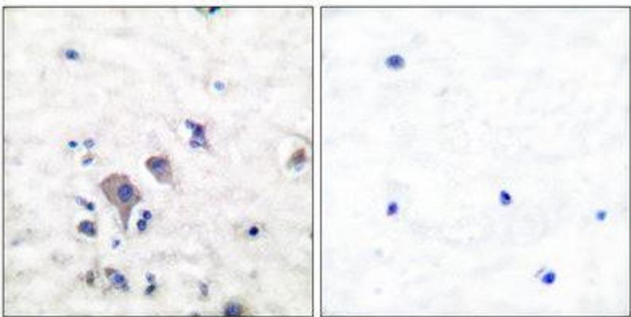
Restrictions: For Research Use only

Handling

Storage: -20 °C

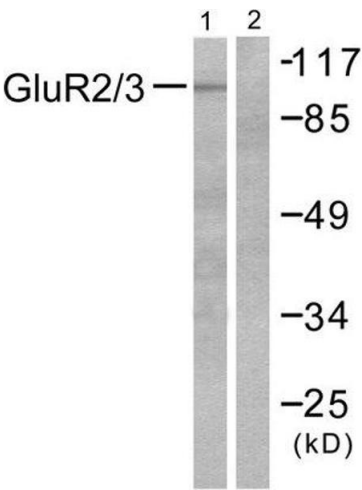
Storage Comment: Aliquot and store at -20 °C. Avoid repeated freeze/thaw cycles.

Images



Immunohistochemistry

Image 1.



Western Blotting

Image 2.