



[Go to Product page](#)

Datasheet for ABIN184858
anti-RAD51C antibody (N-Term)

1 Image

Overview

Quantity:	100 µg
Target:	RAD51C
Binding Specificity:	N-Term
Reactivity:	Human
Host:	Goat
Clonality:	Polyclonal
Conjugate:	This RAD51C antibody is un-conjugated
Application:	Western Blotting (WB), ELISA

Product Details

Purpose:	RAD51C
Immunogen:	Peptide with sequence RGKTFRFEMQRDL-C, from the N Terminus of the protein sequence according to NP_002867.1, NP_478123.1.
Sequence:	RGKTFRFEMQ RDL
Isotype:	IgG
Specificity:	This antibody is expected to recognise all reported human isoforms.
Cross-Reactivity:	Human
Purification:	Purified from goat serum by ammonium sulphate precipitation followed by antigen affinity chromatography using the immunizing peptide.
Grade:	Verified

Target Details

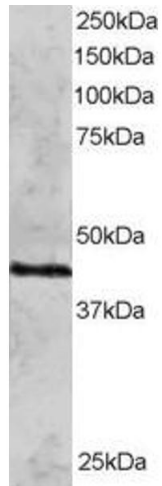
Target:	RAD51C
Alternative Name:	RAD51C (RAD51C Products)
Background:	RAD51C, RAD51 homolog C (<i>S. cerevisiae</i>), RAD51L2, yeast RAD51 homolog 3, DNA repair protein RAD51 homolog 3, MGC104277, RAD51 homolog C, RAD51 homolog C, isoform 1
Gene ID:	5889
NCBI Accession:	NP_002867 , NP_478123
Pathways:	DNA Damage Repair

Application Details

Application Notes:	Western Blot: Approx 45 kDa band seen in HeLa lysate [Predicted MW of 41 kDa according to NP_478123]. Recommended for use at 1-3 µg/mL. Peptide ELISA: antibody detection limit dilution 1:32000.
Restrictions:	For Research Use only

Handling

Format:	Liquid
Concentration:	0.5 mg/mL
Buffer:	Supplied at 0.5 mg/mL in Tris saline, 0.02 % sodium azide, pH 7.3 with 0.5 % bovine serum albumin.
Preservative:	Sodium azide
Precaution of Use:	This product contains Sodium azide: a POISONOUS AND HAZARDOUS SUBSTANCE which should be handled by trained staff only.
Handling Advice:	Minimize freezing and thawing.
Storage:	-20 °C
Storage Comment:	Aliquot and store at -20°C, with minimal freeze/thawing. A working aliquot may be refrigerated at 4°C for a few weeks and still remain viable.



Western Blotting

Image 1. ABIN184858 staining (2 μ g/ml) of HeLa lysate (RIPA buffer, 30 μ g total protein per lane). Primary incubated for 12 hour. Detected by western blot using chemiluminescence.