



[Go to Product page](#)

Datasheet for ABIN1848592
anti-HCG beta antibody (C-Term)

3 Images

Overview

Quantity:	100 µL
Target:	HCG beta
Binding Specificity:	C-Term
Reactivity:	Human
Host:	Rabbit
Clonality:	Polyclonal
Conjugate:	This HCG beta antibody is un-conjugated
Application:	ELISA, Western Blotting (WB), Immunohistochemistry (IHC)

Product Details

Immunogen:	The antiserum was produced against synthesized peptide derived from C-terminal of human hCG beta.
Specificity:	Rabbit polyclonal antibody against hCG beta protein.
Purification:	The antibody was affinity-purified from rabbit antiserum by affinity-chromatography using epitope-specific immunogen

Target Details

Target:	HCG beta
Abstract:	HCG beta Products
UniProt:	P01233

Application Details

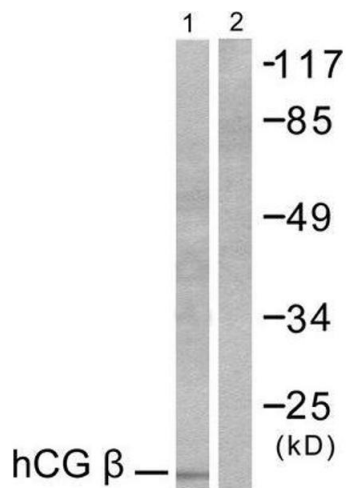
Restrictions: For Research Use only

Handling

Storage: -20 °C

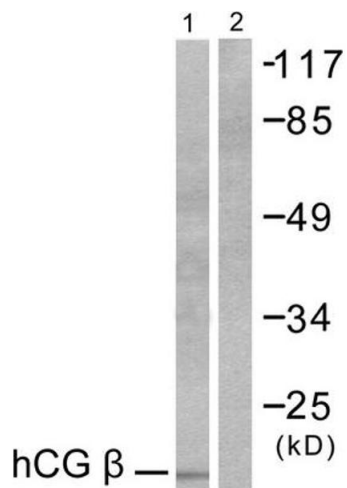
Storage Comment: Aliquot and store at -20 °C. Avoid repeated freeze/thaw cycles.

Images



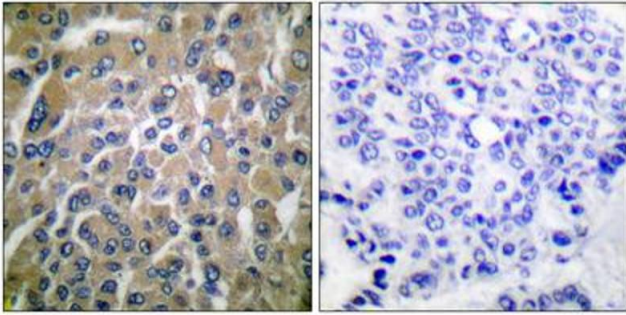
Western Blotting

Image 1.



Western Blotting

Image 2. Western blot analysis of extracts from NIH/3T3 cells, using hCG beta antibody (ABIN5976419).



Immunohistochemistry

Image 3. Immunohistochemical analysis of paraffin-embedded human breast carcinoma tissue using hCG beta antibody (ABIN5976419).