

Datasheet for ABIN184861
anti-MRPL3 antibody (C-Term)[Go to Product page](#)

1 Image

Overview

Quantity:	100 µg
Target:	MRPL3
Binding Specificity:	C-Term
Reactivity:	Human
Host:	Goat
Clonality:	Polyclonal
Conjugate:	This MRPL3 antibody is un-conjugated
Application:	Western Blotting (WB), ELISA

Product Details

Purpose:	MRPL3
Immunogen:	Peptide with sequence NVCQPGAPSITFA, from the C Terminus of the protein sequence according to NP_009139.1.
Sequence:	NVCQPGAPSI TFA
Isotype:	IgG
Cross-Reactivity:	Cow, Human, Pig
Purification:	Purified from goat serum by ammonium sulphate precipitation followed by antigen affinity chromatography using the immunizing peptide.
Grade:	Verified

Target Details

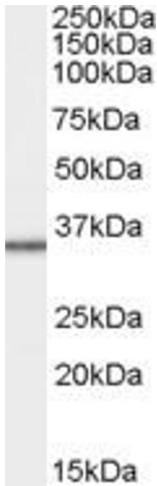
Target:	MRPL3
Alternative Name:	MRPL3 (MRPL3 Products)
Background:	MRPL3, mitochondrial ribosomal protein L3, MRL3, RPML3, ribosomal protein, mitochondrial, L3, mitochondrial 60S ribosomal protein L3
Gene ID:	11222
NCBI Accession:	NP_009139

Application Details

Application Notes:	Western Blot: Approx 35 kDa band observed in lysates of cell line HepG2 (calculated MW of 38.6 kDa according to NP_009139.1). Recommended concentration: 1-3 µg/mL. Peptide ELISA: antibody detection limit dilution 1:32000.
Restrictions:	For Research Use only

Handling

Format:	Liquid
Concentration:	0.5 mg/mL
Buffer:	Supplied at 0.5 mg/mL in Tris saline, 0.02 % sodium azide, pH 7.3 with 0.5 % bovine serum albumin.
Preservative:	Sodium azide
Precaution of Use:	This product contains Sodium azide: a POISONOUS AND HAZARDOUS SUBSTANCE which should be handled by trained staff only.
Handling Advice:	Minimize freezing and thawing.
Storage:	-20 °C
Storage Comment:	Aliquot and store at -20°C, with minimal freeze/thawing. A working aliquot may be refrigerated at 4°C for a few weeks and still remain viable.



Western Blotting

Image 1. ABIN184861 staining (1µg/ml) of HepG2 cell lysate (RIPA buffer, 35µg total protein per lane). Primary incubated for 1 hour. Detected by western blot using chemiluminescence.