

Datasheet for ABIN1848654

anti-Mammaglobin antibody (Internal Region)

5 Images

[Go to Product page](#)

Overview

Quantity:	100 µL
Target:	Mammaglobin
Binding Specificity:	Internal Region
Reactivity:	Human, Rat
Host:	Rabbit
Clonality:	Polyclonal
Conjugate:	This Mammaglobin antibody is un-conjugated
Application:	Immunohistochemistry (IHC), ELISA, Western Blotting (WB), Immunofluorescence (fixed cells) (IF/ICC)

Product Details

Immunogen:	The antiserum was produced against synthesized peptide derived from internal of human mammaglobin.
Specificity:	Rabbit polyclonal antibody against Mammaglobin protein.
Purification:	The antibody was affinity-purified from rabbit antiserum by affinity-chromatography using epitope-specific immunogen

Target Details

Target:	Mammaglobin
Abstract:	Mammaglobin Products
UniProt:	Q13296

Application Details

Application Notes: Optimal working dilution should be determined by the investigator.

Restrictions: For Research Use only

Handling

Format: Liquid

Buffer: PBS (without Mg^{2+} or Ca^{2+}), pH 7.4, 150 mM NaCl, 0.02 % sodium azide and 50 % glycerol.

Preservative: Sodium azide, Without preservative

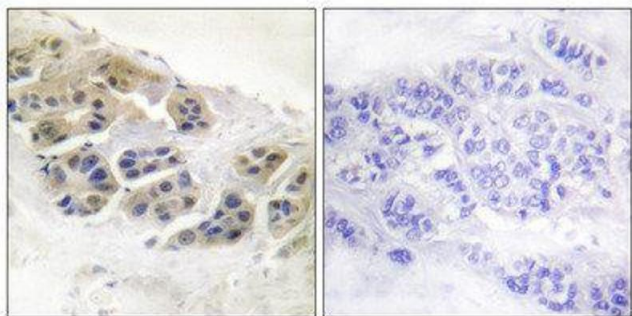
Precaution of Use: This product contains Sodium azide: a POISONOUS AND HAZARDOUS SUBSTANCE which should be handled by trained staff only.

Storage: -20 °C

Storage Comment: Aliquot and store at -20 °C. Avoid repeated freeze/thaw cycles.

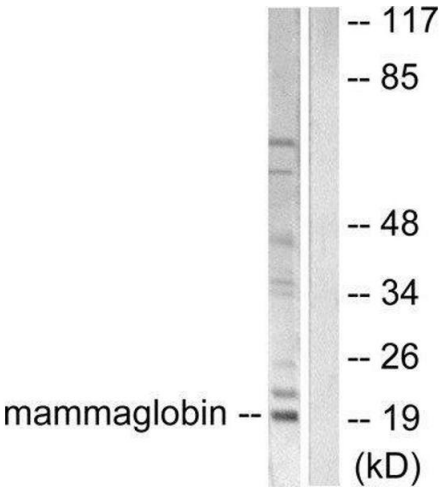
Expiry Date: 12 months

Images



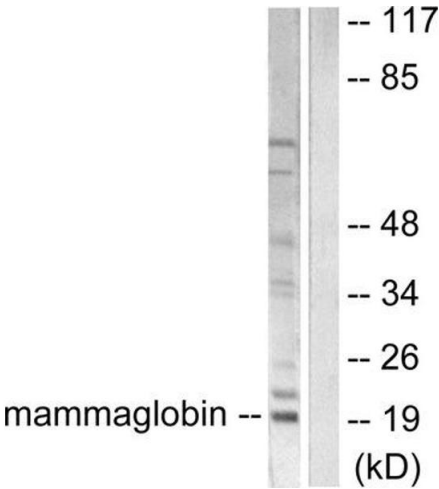
Immunohistochemistry

Image 1.



Western Blotting

Image 2.



Western Blotting

Image 3. Western blot analysis of extracts from HepG2 cells, using Mammaglobin Antibody (ABIN2843548).

Please check the [product details page](#) for more images. Overall 5 images are available for ABIN1848654.