

## Datasheet for ABIN184871 anti-CCNDBP1 antibody (C-Term)



[Go to Product page](#)

### 1 Image

#### Overview

Quantity:	100 µg
Target:	CCNDBP1
Binding Specificity:	C-Term
Reactivity:	Human
Host:	Goat
Clonality:	Polyclonal
Conjugate:	This CCNDBP1 antibody is un-conjugated
Application:	ELISA, Immunohistochemistry (IHC)

#### Product Details

Purpose:	GCIP / MAID
Immunogen:	C-NRIKELTQSELEL
Sequence:	NRIKELTQSE LEL
Isotype:	IgG
Specificity:	This antibody is expected to recognise both human isoforms of this protein.
Cross-Reactivity:	Dog, Human
Purification:	Purified from goat serum by ammonium sulphate precipitation followed by antigen affinity chromatography using the immunizing peptide.
Grade:	Verified

## Target Details

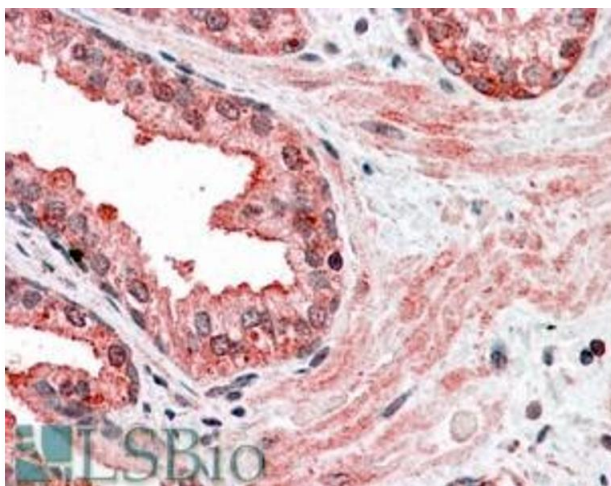
Target:	CCNDBP1
Alternative Name:	CCNDBP1 ( <a href="#">CCNDBP1 Products</a> )
Background:	CCNDBP1, cyclin D-type binding-protein 1, DIP1, GCIP, HHM Protein, MAID protein, grap2 cyclin interacting protein, D-type cyclin-interacting protein 1
Gene ID:	23582
NCBI Accession:	<a href="#">NP_036274</a> , <a href="#">NP_411241</a>

## Application Details

Application Notes:	<p>Immunohistochemistry: In paraffin embedded Human Prostate shows textured cytoplasm staining with emphasis on the luminal side of the secretory cells in the glands. Recommended concentration, 3-6 µg/mL.</p> <p>Western Blot: Preliminary experiments gave an approx 55 kDa band in K562 lysate at 0.5 µg/mL. This band was successfully blocked by incubation with the immunising peptide. Please note that currently we cannot find an explanation in the literature for the</p> <p>Peptide ELISA: antibody detection limit dilution 1:32000.</p>
Restrictions:	For Research Use only

## Handling

Format:	Liquid
Concentration:	0.5 mg/mL
Buffer:	Supplied at 0.5 mg/mL in Tris saline, 0.02 % sodium azide, pH 7.3 with 0.5 % bovine serum albumin.
Preservative:	Sodium azide
Precaution of Use:	This product contains Sodium azide: a POISONOUS AND HAZARDOUS SUBSTANCE which should be handled by trained staff only.
Handling Advice:	Minimize freezing and thawing.
Storage:	-20 °C
Storage Comment:	Aliquot and store at -20°C, with minimal freeze/thawing. A working aliquot may be refrigerated at 4°C for a few weeks and still remain viable.



#### Immunohistochemistry

**Image 1.** ABIN184871 (3.8µg/ml) staining of paraffin embedded Human Prostate. Steamed antigen retrieval with citrate buffer pH 6, AP-staining.