

Datasheet for ABIN184872
anti-NDRG1 antibody (C-Term)

5 Images

[Go to Product page](#)

Overview

Quantity:	100 µg
Target:	NDRG1
Binding Specificity:	C-Term
Reactivity:	Human
Host:	Goat
Clonality:	Polyclonal
Conjugate:	This NDRG1 antibody is un-conjugated
Application:	Western Blotting (WB), ELISA, Immunohistochemistry (IHC)

Product Details

Purpose:	NDRG1
Immunogen:	Peptide with sequence GNSAGPKSMEVSC, from the C Terminus of the protein sequence according to NP_006087.2, NP_001128714.1.
Sequence:	GNSAGPKSME VSC
Isotype:	IgG
Specificity:	The variants (NP_006087.2, NP_001128714.1) encode the same protein
Cross-Reactivity:	Human
Purification:	Purified from goat serum by ammonium sulphate precipitation followed by antigen affinity chromatography using the immunizing peptide.
Grade:	Verified

Target Details

Target:	NDRG1
Alternative Name:	NDRG1 (NDRG1 Products)
Background:	NDRG1, N-myc downstream regulated gene 1, CAP43, CMT4D, DRG1, GC4, HMSNL, NDR1, NMSL, PROXY1, RIT42, RTP, TARG1, TDD5, N-myc downstream regulated gene 1 protein, differentiation-related gene 1 protein, nickel-specific induction protein Cap43, protein reg
Molecular Weight:	42.8kDa
Gene ID:	10397, 17990
NCBI Accession:	NP_006087

Application Details

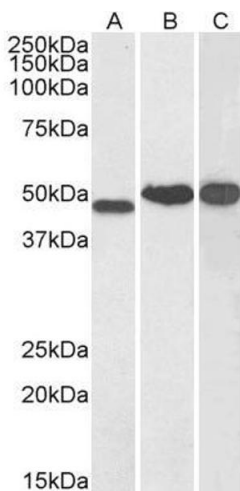
Application Notes:	Immunohistochemistry: In paraffin embedded Human hepatocellular carcinoma shows strong labeling of membranes and weaker staining of cytoplasm. These observations are consistent with those obtained by different antibodies. Recommended concentration: 0.5-2µ Western Blot: Approx 48 kDa band observed in Human Kidney, and approx 50 kDa band observed in Human Brain (Cerebellum) and Testis lysates (calculated MW of 42.8 kDa according to NP_006087.2). This molecular weight is routinely observed by other sources. Rec Peptide ELISA: antibody detection limit dilution 1:32000.
Restrictions:	For Research Use only

Handling

Format:	Liquid
Concentration:	0.5 mg/mL
Buffer:	Supplied at 0.5 mg/mL in Tris saline, 0.02 % sodium azide, pH 7.3 with 0.5 % bovine serum albumin.
Preservative:	Sodium azide
Precaution of Use:	This product contains Sodium azide: a POISONOUS AND HAZARDOUS SUBSTANCE which should be handled by trained staff only.
Handling Advice:	Minimize freezing and thawing.
Storage:	-20 °C
Storage Comment:	Aliquot and store at -20°C, with minimal freeze/thawing. A working aliquot may be refrigerated

at 4°C for a few weeks and still remain viable.

Images



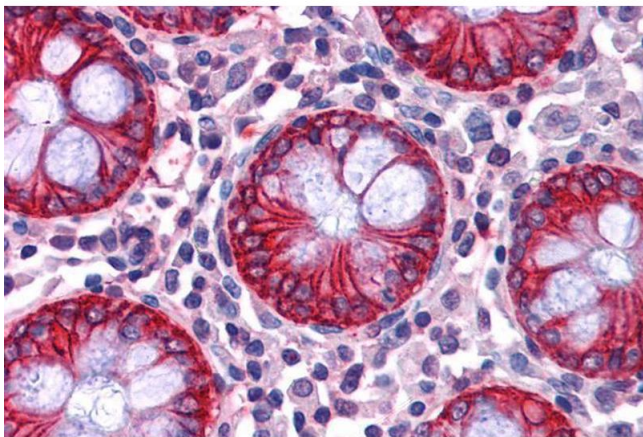
Western Blotting

Image 1. ABIN184872 (0.1µg/ml) staining of Human Kidney (A), Cerebellum (B) and Testis (C) lysate (35µg protein in RIPA buffer). Primary incubation was 1 hour. Detected by chemiluminescence.



Western Blotting

Image 2. ABIN184872 staining (0.1µg/ml) of Human Kidney lysate (RIPA buffer, 35µg total protein per lane). Primary incubated for 1 hour. Detected by western blot using chemiluminescence.



Immunohistochemistry

Image 3. ABIN184872 (2.5µg/ml) staining of paraffin embedded Human Colon. Steamed antigen retrieval with citrate buffer pH 6, AP-staining.

Please check the [product details page](#) for more images. Overall 5 images are available for ABIN184872.