



Datasheet for ABIN1848746

anti-Kv3.2b Potassium Channel antibody (C-Term)



[Go to Product page](#)

4 Images

Overview

Quantity:	100 µL
Target:	Kv3.2b Potassium Channel
Binding Specificity:	C-Term
Reactivity:	Human, Mouse, Rat
Host:	Rabbit
Clonality:	Polyclonal
Conjugate:	This Kv3.2b Potassium Channel antibody is un-conjugated
Application:	Immunohistochemistry (IHC), ELISA, Western Blotting (WB)

Product Details

Immunogen:	The antiserum was produced against synthesized peptide derived from C-terminal of human Potassium Channel Kv3.2b.
Specificity:	Rabbit polyclonal antibody against Potassium Channel Kv3.
Purification:	The antibody was affinity-purified from rabbit antiserum by affinity-chromatography using epitope-specific immunogen

Target Details

Target:	Kv3.2b Potassium Channel
Alternative Name:	Potassium Channel Kv3.2b (Kv3.2b Potassium Channel Products)
UniProt:	Q96PR1

Application Details

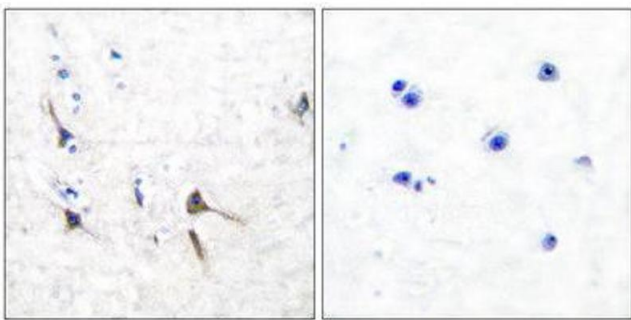
Restrictions: For Research Use only

Handling

Storage: -20 °C

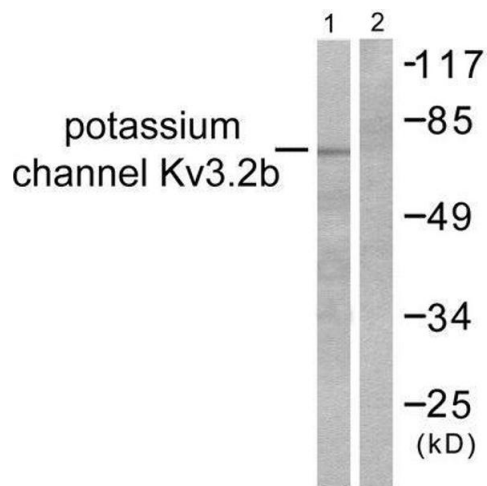
Storage Comment: Aliquot and store at -20 °C. Avoid repeated freeze/thaw cycles.

Images



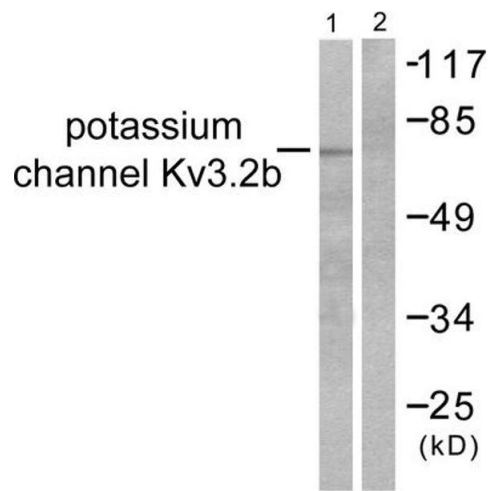
Immunohistochemistry

Image 1.



Western Blotting

Image 2.



Western Blotting

Image 3. Western blot analysis of extracts from HepG2 cells, using Potassium Channel Kv3.2b antibody (ABIN5976492).

Please check the [product details page](#) for more images. Overall 4 images are available for ABIN1848746.