



[Go to Product page](#)

Datasheet for ABIN1848776

anti-Sodium Channel antibody (Internal Region, pan)

4 Images

Overview

Quantity:	100 µL
Target:	Sodium Channel
Binding Specificity:	Internal Region, pan
Reactivity:	Human, Mouse, Rat
Host:	Rabbit
Clonality:	Polyclonal
Conjugate:	This Sodium Channel antibody is un-conjugated
Application:	Immunohistochemistry (IHC), ELISA, Western Blotting (WB)

Product Details

Immunogen:	The antiserum was produced against synthesized peptide derived from internal of human sodium channel.
Specificity:	Rabbit polyclonal antibody against Sodium Channel-pan protein.
Purification:	The antibody was affinity-purified from rabbit antiserum by affinity-chromatography using epitope-specific immunogen

Target Details

Target:	Sodium Channel
Abstract:	Sodium Channel Products
UniProt:	P35498 , Q99250 , Q9NY46 , P35499 , Q14524 , Q9UQD0 , Q15858 , Q9Y5Y9 , Q9UI33

Application Details

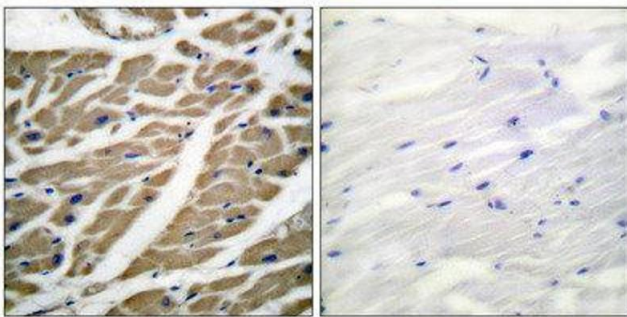
Restrictions: For Research Use only

Handling

Storage: -20 °C

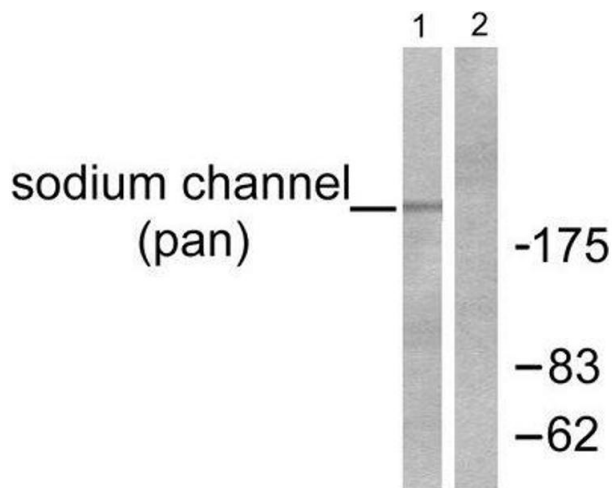
Storage Comment: Aliquot and store at -20 °C. Avoid repeated freeze/thaw cycles.

Images



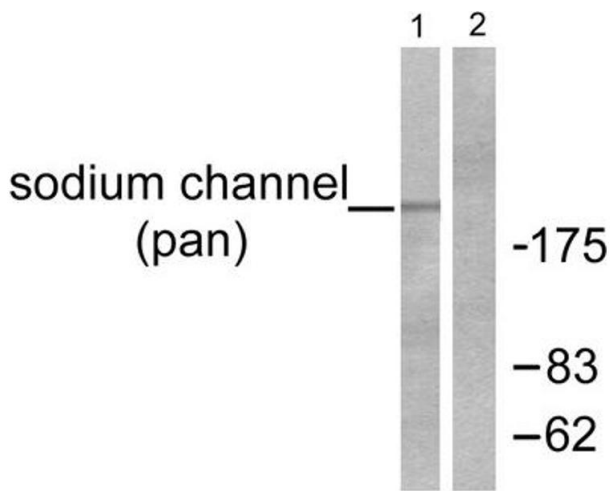
Immunohistochemistry

Image 1.



Western Blotting

Image 2.



Western Blotting

Image 3. Western blot analysis of extracts from HuvEc cells, using Sodium Channel-pan Antibody (ABIN5976507).

Please check the [product details page](#) for more images. Overall 4 images are available for ABIN1848776.