

Datasheet for ABIN184878
anti-SETDB2 antibody (N-Term)[Go to Product page](#)

3 Images

Overview

Quantity:	100 µg
Target:	SETDB2
Binding Specificity:	N-Term
Reactivity:	Human
Host:	Goat
Clonality:	Polyclonal
Conjugate:	This SETDB2 antibody is un-conjugated
Application:	Western Blotting (WB), ELISA

Product Details

Purpose:	CLLD8 / SETDB2
Immunogen:	Peptide with sequence GEKNGDAKTFWME-C, from the N Terminus of the protein sequence according to NP_114121.2, NP_001153780.1.
Sequence:	GEKNGDAKTF WME
Isotype:	IgG
Specificity:	This antibody is expected to recognize both reported isoforms (NP_114121.2, NP_001153780.1).
Cross-Reactivity:	Cow, Dog, Human, Mouse, Pig, Rat
Purification:	Purified from goat serum by ammonium sulphate precipitation followed by antigen affinity chromatography using the immunizing peptide.

Product Details

Grade: Verified

Target Details

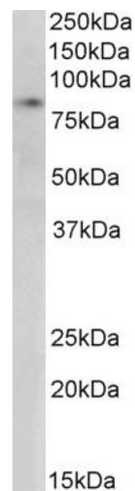
Target:	SETDB2
Alternative Name:	SETDB2 (SETDB2 Products)
Background:	SETDB2, CLLD8, SET domain, bifurcated 2, CLLL8 protein, C13orf4, CLLL8, DKFZp586I0123, DKFZp761J1217, KMT1F, chronic lymphocytic leukemia deletion region 8, lysine N-methyltransferase 1F, histone-lysine N-methyltransferase SETDB2
Gene ID:	83852
NCBI Accession:	NP_114121 , NP_001153780

Application Details

Application Notes:	Western Blot: Approx 85 kDa band observed in nuclear lysates of cell line HeLa (calculated MW of 81.9 kDa according to NP_114121.2). Recommended concentration: 1-3 µg/mL. Primary incubation was 1 hour. Peptide ELISA: antibody detection limit dilution 1:1000.
Restrictions:	For Research Use only

Handling

Format:	Liquid
Concentration:	0.5 mg/mL
Buffer:	Supplied at 0.5 mg/mL in Tris saline, 0.02 % sodium azide, pH 7.3 with 0.5 % bovine serum albumin.
Preservative:	Sodium azide
Precaution of Use:	This product contains Sodium azide: a POISONOUS AND HAZARDOUS SUBSTANCE which should be handled by trained staff only.
Handling Advice:	Minimize freezing and thawing.
Storage:	-20 °C
Storage Comment:	Aliquot and store at -20°C, with minimal freeze/thawing. A working aliquot may be refrigerated at 4°C for a few weeks and still remain viable.

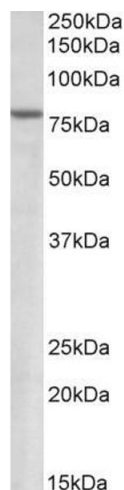


Western Blotting

Image 1. (ABIN184878) (0.3 µg/mL) staining of Nuclear HeLa lysate (35 µg protein in RIPA buffer). Detected by chemiluminescence.



Image 2. ABIN184878 (0.5 µg/mL) staining of human heart lysate (35 µg protein in RIPA buffer). Primary incubation was 1 hour. Detected by chemiluminescence.



Western Blotting

Image 3. ABIN184878 (1.5 µg/mL) staining of Human Heart lysate (35 µg protein in RIPA buffer). Primary incubation was 1 hour. Detected by chemiluminescence.