



[Go to Product page](#)

Datasheet for ABIN1848790

anti-Synuclein antibody (N-Term, pan)

3 Images

Overview

Quantity:	100 µL
Target:	Synuclein (SYU)
Binding Specificity:	N-Term, pan
Reactivity:	Human, Mouse, Rat
Host:	Rabbit
Clonality:	Polyclonal
Conjugate:	This Synuclein antibody is un-conjugated
Application:	Western Blotting (WB), Immunohistochemistry (IHC), ELISA

Product Details

Immunogen:	The antiserum was produced against synthesized peptide derived from N-terminal of human synuclein.
Specificity:	Rabbit polyclonal antibody against Synuclein-pan protein.
Purification:	The antibody was affinity-purified from rabbit antiserum by affinity-chromatography using epitope-specific immunogen

Target Details

Target:	Synuclein (SYU)
Alternative Name:	Synuclein-pan (SYU Products)
UniProt:	P37840

Application Details

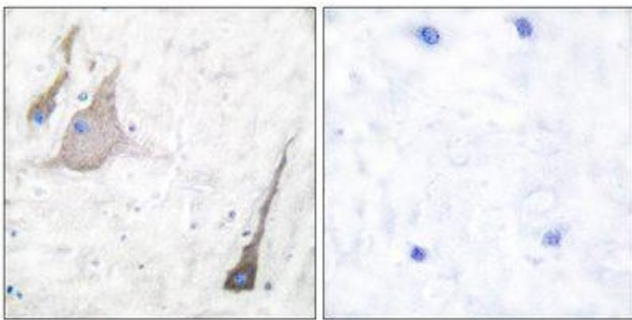
Restrictions: For Research Use only

Handling

Storage: -20 °C

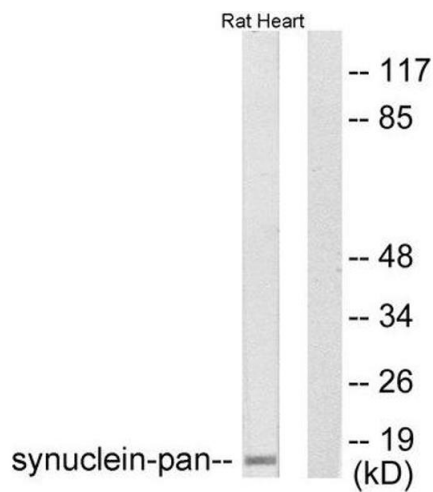
Storage Comment: Aliquot and store at -20 °C. Avoid repeated freeze/thaw cycles.

Images



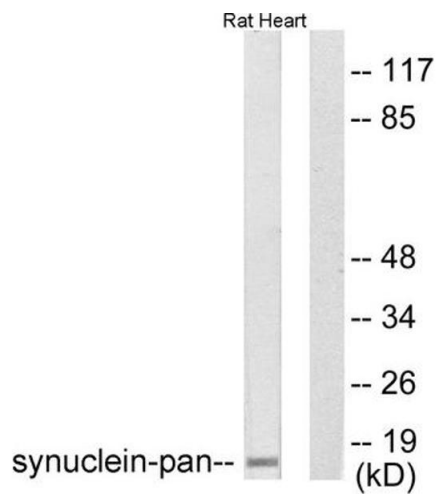
Immunohistochemistry

Image 1.



Western Blotting

Image 2.



Western Blotting

Image 3. Western blot analysis of extracts from rat heart, using Synuclein-pan antibody (ABIN5976513).