

Datasheet for ABIN184880

anti-Lysine (K)-Specific Methyltransferase 2B (KMT2B) (N-Term) antibody[Go to Product page](#)**2** Images

Overview

Quantity:	100 µg
Target:	Lysine (K)-Specific Methyltransferase 2B (KMT2B)
Binding Specificity:	N-Term
Reactivity:	Human
Host:	Goat
Clonality:	Polyclonal
Conjugate:	Un-conjugated
Application:	ELISA, Immunohistochemistry (IHC)

Product Details

Purpose:	KMT2D/MLL2
Immunogen:	Peptide with sequence DSQNLAGEDKDSQ-C, from the N Terminus of the protein sequence according to NP_003473.3.
Sequence:	DSQNLAGEDK DSQ
Isotype:	IgG
Specificity:	The immunizing peptide was designed from NP_003473.1. Since then the sequence has changed in the databases and currently differs at two locations in NP_003473.3.
Predicted Reactivity:	Human
Purification:	Purified from goat serum by ammonium sulphate precipitation followed by antigen affinity chromatography using the immunizing peptide.

Product Details

Grade: Verified

Target Details

Target: Lysine (K)-Specific Methyltransferase 2B (KMT2B)

Alternative Name: KMT2D ([KMT2B Products](#))

Background: MLL2, myeloid/lymphoid or mixed-lineage leukemia 2, ALR, ALL1-related gene, AAD10, CAGL114, KMT2D, MLL4, TNRC21, ALL1-related, trinucleotide repeat containing 21, KMS, KABUK1, Lysine methyltransferase 2D

Gene ID: 8085

NCBI Accession: [NP_003473](#)

Pathways: [Warburg Effect](#)

Application Details

Application Notes: DS WB Results: Using our routine western blotting protocol we would not expect to reliably detect proteins larger than 250 kDa (calculated MW of approx. 593KDa according to NP_003473.3).

DS IHC Results: In paraffin embedded Human Placenta shows nuclear staining in the trophoblasts . Similar nuclear patches are observed in Human Liver. Recommended concentration: 4-8 µg/mL.

Peptide ELISA: antibody detection limit dilution 1:16000.

Restrictions: For Research Use only

Handling

Format: Liquid

Concentration: 0.5 mg/mL

Buffer: Supplied at 0.5 mg/mL in Tris saline, 0.02 % sodium azide, pH 7.3 with 0.5 % bovine serum albumin.

Preservative: Sodium azide

Precaution of Use: This product contains Sodium azide: a POISONOUS AND HAZARDOUS SUBSTANCE which should be handled by trained staff only.

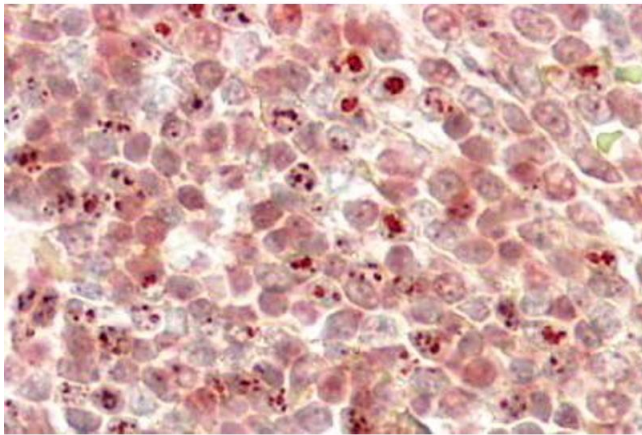
Handling Advice: Minimize freezing and thawing.

Handling

Storage: -20 °C

Storage Comment: Aliquot and store at -20°C, with minimal freeze/thawing. A working aliquot may be refrigerated at 4°C for a few weeks and still remain viable.

Images



Immunohistochemistry

Image 1. ABIN184880 (3.8µg/ml) staining of paraffin embedded Human Liver. Steamed antigen retrieval with citrate buffer pH 6, HRP-staining.

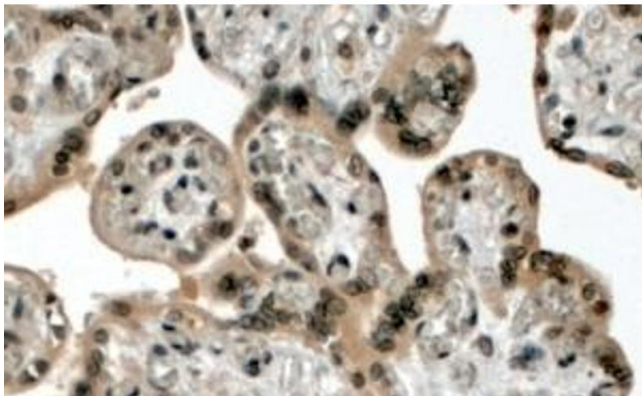


Image 2. (4µg/ml) staining of paraffin embedded Human Placenta. Steamed antigen retrieval with citrate buffer pH 6, HRP-staining.