

Datasheet for ABIN184881

anti-Lysine (K)-Specific Methyltransferase 2B (KMT2B) (C-Term) antibody[Go to Product page](#)**1** Image

Overview

Quantity:	100 µg
Target:	Lysine (K)-Specific Methyltransferase 2B (KMT2B)
Binding Specificity:	C-Term
Reactivity:	Human
Host:	Goat
Clonality:	Polyclonal
Conjugate:	Un-conjugated
Application:	ELISA, Immunohistochemistry (IHC)

Product Details

Purpose:	KMT2B/MLL4
Immunogen:	Peptide with sequence CNCGAKRCRRFLN, from the C Terminus of the protein sequence according to NP_055542.1.
Sequence:	CNCGAKRCRR FLN
Isotype:	IgG
Cross-Reactivity:	Dog, Human, Mouse, Pig, Rat
Purification:	Purified from goat serum by ammonium sulphate precipitation followed by antigen affinity chromatography using the immunizing peptide.
Grade:	Verified

Target Details

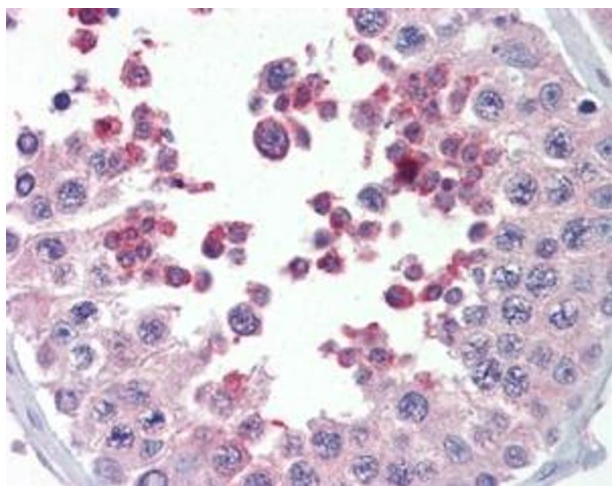
Target:	Lysine (K)-Specific Methyltransferase 2B (KMT2B)
Alternative Name:	KMT2B (KMT2B Products)
Background:	KMT2B, MLL4, myeloid/lymphoid or mixed-lineage leukemia 4, HRX2, MLL2, KIAA0304, KIAA0304 gene product, DYT28, MLL1B, WBP7, WBP-7, CXXC10, Lysine methyltransferase 2B histone-lysine N-methyltransferase 2B[
Gene ID:	9757, 75410
NCBI Accession:	NP_055542
Pathways:	Warburg Effect

Application Details

Application Notes:	Immunohistochemistry: Positive staining seen in paraffin embedded Human Testis and Human Brain Cortex. Recommended concentration: 5-10 µg/mL. Western Blot: Using our routine western blotting protocol we would not expect to reliably detect proteins larger than 250 kDa (calculated MWt. of approx. 294KDa according to NP_055542.1). Peptide ELISA: antibody detection limit dilution 1:128000.
Restrictions:	For Research Use only

Handling

Format:	Liquid
Concentration:	0.5 mg/mL
Buffer:	Supplied at 0.5 mg/mL in Tris saline, 0.02 % sodium azide, pH 7.3 with 0.5 % bovine serum albumin.
Preservative:	Sodium azide
Precaution of Use:	This product contains Sodium azide: a POISONOUS AND HAZARDOUS SUBSTANCE which should be handled by trained staff only.
Handling Advice:	Minimize freezing and thawing.
Storage:	-20 °C
Storage Comment:	Aliquot and store at -20°C, with minimal freeze/thawing. A working aliquot may be refrigerated at 4°C for a few weeks and still remain viable.



Immunohistochemistry

Image 1. ABIN184881 (5µg/ml) staining of paraffin embedded Human Testis. Steamed antigen retrieval with citrate buffer pH 6, AP-staining.