

Datasheet for ABIN184882  
**anti-SUV39H2 antibody (C-Term)**[Go to Product page](#)

## 1 Image

## Overview

Quantity:	100 µg
Target:	SUV39H2
Binding Specificity:	C-Term
Reactivity:	Rat
Host:	Goat
Clonality:	Polyclonal
Application:	Western Blotting (WB), ELISA

## Product Details

Purpose:	SUV39H2
Immunogen:	Peptide with sequence CKCGAVTCRGYLN, from the C Terminus of the protein sequence according to NP_078946.1.
Sequence:	CKCGAVTCRG YLN
Isotype:	IgG
Cross-Reactivity:	Cow, Dog, Human, Mouse, Pig, Rat
Purification:	Purified from goat serum by ammonium sulphate precipitation followed by antigen affinity chromatography using the immunizing peptide.
Grade:	Verified

## Target Details

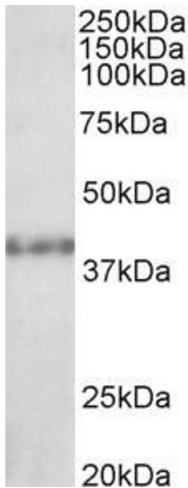
Target:	SUV39H2
Alternative Name:	SUV39H2 ( <a href="#">SUV39H2 Products</a> )
Background:	SUV39H2, suppressor of variation 3-9 (Drosophila) homolog 2 (Drosophila) , FLJ23414, FLJ23414, RP11-2K17.2, KMT1, uppressor of variegation 3-9 homolog 2 (Drosophila), KMT1B, suppressor of variegation 3-9 homolog 2
Gene ID:	79723
NCBI Accession:	<a href="#">NP_078946</a>

## Application Details

Application Notes:	Western Blot: Approx 38 kDa band observed in Rat Kidney and Testis lysates (calculated MW of 39.9 kDa according to NP_078946.1). Recommended concentration: 1-3 µg/mL. Primary incubation was 1 hour. Preliminary testing was unsuccessful on Mouse, Human and Pi Peptide ELISA: antibody detection limit dilution 1:8000.
Restrictions:	For Research Use only

## Handling

Format:	Liquid
Concentration:	0.5 mg/mL
Buffer:	Supplied at 0.5 mg/mL in Tris saline, 0.02 % sodium azide, pH 7.3 with 0.5 % bovine serum albumin.
Preservative:	Sodium azide
Precaution of Use:	This product contains Sodium azide: a POISONOUS AND HAZARDOUS SUBSTANCE which should be handled by trained staff only.
Handling Advice:	Minimize freezing and thawing.
Storage:	-20 °C
Storage Comment:	Aliquot and store at -20°C, with minimal freeze/thawing. A working aliquot may be refrigerated at 4°C for a few weeks and still remain viable.



Western Blotting

**Image 1.** ABIN184882 (1µg/ml) staining of Rat Kidney lysate (35µg protein in RIPA buffer). Detected by chemiluminescence.