



[Go to Product page](#)

Datasheet for ABIN1848824  
**anti-HAT antibody (C-Term)**

1 Image

Overview

Quantity:	100 µL
Target:	HAT
Binding Specificity:	C-Term
Reactivity:	Human, Mouse, Rat
Host:	Rabbit
Clonality:	Polyclonal
Conjugate:	This HAT antibody is un-conjugated
Application:	ELISA, Western Blotting (WB)

Product Details

Immunogen:	The antiserum was produced against synthesized peptide derived from C-terminal of human HAT.
Specificity:	Rabbit polyclonal antibody against HAT protein.
Purification:	The antibody was affinity-purified from rabbit antiserum by affinity-chromatography using epitope-specific immunogen

Target Details

Target:	HAT
Alternative Name:	HAT ( <a href="#">HAT Products</a> )
UniProt:	<a href="#">O14929</a>

## Target Details

---

Pathways: [Positive Regulation of Peptide Hormone Secretion, Regulation of Carbohydrate Metabolic Process](#)

## Application Details

---

Restrictions: For Research Use only

## Handling

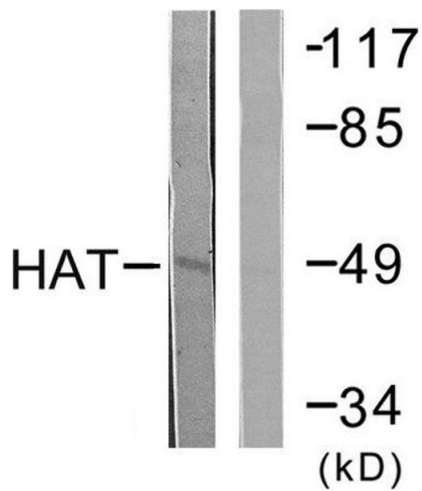
---

Storage: -20 °C

Storage Comment: Aliquot and store at -20 °C. Avoid repeated freeze/thaw cycles.

## Images

---



### Western Blotting

Image 1.