



Datasheet for ABIN184884
anti-SETMAR antibody (C-Term)



[Go to Product page](#)

1 Image

Overview

Quantity:	100 µg
Target:	SETMAR
Binding Specificity:	C-Term
Reactivity:	Human
Host:	Goat
Clonality:	Polyclonal
Conjugate:	This SETMAR antibody is un-conjugated
Application:	Western Blotting (WB), ELISA

Product Details

Purpose:	SETMAR
Immunogen:	Peptide with sequence RWQKCVCDCNGSYFD, from the C Terminus of the protein sequence according to NP_006506.3.
Sequence:	RWQKCVCDCNG SYFD
Isotype:	IgG
Cross-Reactivity:	Cow, Human
Purification:	Purified from goat serum by ammonium sulphate precipitation followed by antigen affinity chromatography using the immunizing peptide.
Grade:	Verified

Target Details

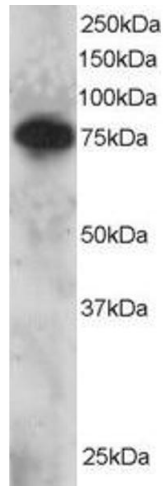
Target:	SETMAR
Alternative Name:	SETMAR (SETMAR Products)
Background:	SETMAR, SET domain and mariner transposase fusion gene, METNASE, SET domain and mariner transposase fusion
Gene ID:	6419
NCBI Accession:	NP_006506
Pathways:	Positive Regulation of Response to DNA Damage Stimulus

Application Details

Application Notes:	Western Blot: Approx 70-75 kDa band seen in Daudi lysate. Recommended for use at 1-3 μ g/mL. Peptide ELISA: antibody detection limit dilution 1:16000.
Restrictions:	For Research Use only

Handling

Format:	Liquid
Concentration:	0.5 mg/mL
Buffer:	Supplied at 0.5 mg/mL in Tris saline, 0.02 % sodium azide, pH 7.3 with 0.5 % bovine serum albumin.
Preservative:	Sodium azide
Precaution of Use:	This product contains Sodium azide: a POISONOUS AND HAZARDOUS SUBSTANCE which should be handled by trained staff only.
Handling Advice:	Minimize freezing and thawing.
Storage:	-20 °C
Storage Comment:	Aliquot and store at -20°C, with minimal freeze/thawing. A working aliquot may be refrigerated at 4°C for a few weeks and still remain viable.



Western Blotting

Image 1. ABIN184884 staining (2 μ g/ml) of Daudi lysate (RIPA buffer, 30 μ g total protein per lane). Primary incubated for 12 hour. Detected by chemiluminescence.