

Datasheet for ABIN184894
anti-UBE2I antibody (N-Term)

4 Images

[Go to Product page](#)

Overview

Quantity:	100 µg
Target:	UBE2I
Binding Specificity:	N-Term
Reactivity:	Human, Rat
Host:	Goat
Clonality:	Polyclonal
Conjugate:	This UBE2I antibody is un-conjugated
Application:	Western Blotting (WB), ELISA, Immunohistochemistry (IHC)

Product Details

Purpose:	UBE2I
Immunogen:	Peptide with sequence SGIALSRLAQERK-C, from the N Terminus of the protein sequence according to NP_003336.1, NP_919235.1, NP_919236.1, NP_919237.1.
Sequence:	SGIALSRLAQ ERK
Isotype:	IgG
Specificity:	Reported variants represent identical protein: NP_919237.1, NP_003336.1, NP_919236.1, NP_919235.1
Cross-Reactivity:	Dog, Human, Mouse, Rat
Purification:	Purified from goat serum by ammonium sulphate precipitation followed by antigen affinity chromatography using the immunizing peptide.

Product Details

Grade: Verified

Target Details

Target: UBE2I

Alternative Name: UBE2I ([UBE2I Products](#))

Background: UBE2I, ubiquitin-conjugating enzyme E2I (UBC9 homolog, yeast), C358B7.1, P18, UBC9, SUMO-1-protein ligase, ubiquitin carrier protein, ubiquitin conjugating enzyme 9, ubiquitin-conjugating enzyme E2I, ubiquitin-conjugating enzyme E2I (homologous to yeast U

Gene ID: 7329, 22196, 25573

NCBI Accession: [NP_003336](#)

Pathways: [Intracellular Steroid Hormone Receptor Signaling Pathway](#), [Regulation of Intracellular Steroid Hormone Receptor Signaling](#), [Ubiquitin Proteasome Pathway](#)

Application Details

Application Notes: Immunohistochemistry: In paraffin embedded Human Kidney, shows nuclear staining of some epithelial cells of glomeruli and renal tubules. Recommended concentration: 1 µg/mL.
Western Blot: Approx 17 kDa band observed in Human Kidney lysates and in Rat Ovary, Heart and Testis lysates (calculated MW of 18.0 kDa according to Human NP_003336.1).
Recommended concentration: 0.1-0.3 µg/mL. Primary incubation was 1 hour.
Peptide ELISA: antibody detection limit dilution 1:64000.

Restrictions: For Research Use only

Handling

Format: Liquid

Concentration: 0.5 mg/mL

Buffer: Supplied at 0.5 mg/mL in Tris saline, 0.02 % sodium azide, pH 7.3 with 0.5 % bovine serum albumin.

Preservative: Sodium azide

Precaution of Use: This product contains Sodium azide: a POISONOUS AND HAZARDOUS SUBSTANCE which should be handled by trained staff only.

Handling Advice: Minimize freezing and thawing.

Handling

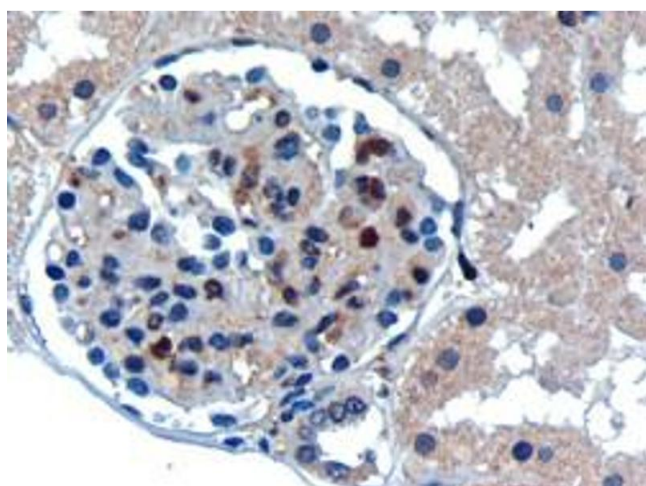
Storage: -20 °C

Storage Comment: Aliquot and store at -20°C, with minimal freeze/thawing. A working aliquot may be refrigerated at 4°C for a few weeks and still remain viable.

Images



Image 1. ABIN184894 (0.1 ug/ml) staining of Human Kidney lysate (35 ug protein in RIPA buffer). Primary incubation was 1 hour. Detected by chemiluminescence.



Immunohistochemistry

Image 2. ABIN184894 (0.3 ug/ml) staining of paraffin embedded Human Kidney. Microwaved antigen retrieval with Tris/EDTA buffer pH9, HRP-staining.



Western Blotting

Image 3. ABIN184894 (0.1 ug/ml) staining of Human Kidney lysate (35 ug protein in RIPA buffer). Detected by chemiluminescence.

Please check the [product details page](#) for more images. Overall 4 images are available for ABIN184894.