



[Go to Product page](#)

Datasheet for ABIN184897
anti-Ube2t antibody (C-Term)

1 Image

Overview

| | |
|----------------------|--------------------------------------|
| Quantity: | 100 µg |
| Target: | Ube2t |
| Binding Specificity: | C-Term |
| Reactivity: | Human |
| Host: | Goat |
| Clonality: | Polyclonal |
| Conjugate: | This Ube2t antibody is un-conjugated |
| Application: | Western Blotting (WB), ELISA |

Product Details

| | |
|-------------------|---|
| Purpose: | HSPC150 / UBE2T |
| Immunogen: | Peptide with sequence C-QLVGIEKKFHPDV, from the C Terminus of the protein sequence according to NP_054895.1. |
| Sequence: | QLVGIEKKFH PDV |
| Isotype: | IgG |
| Cross-Reactivity: | Human |
| Purification: | Purified from goat serum by ammonium sulphate precipitation followed by antigen affinity chromatography using the immunizing peptide. |
| Grade: | Verified |

Target Details

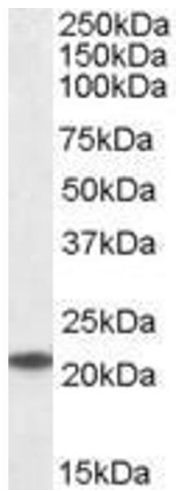
| | |
|-------------------|---|
| Target: | Ube2t |
| Alternative Name: | UBE2T (Ube2t Products) |
| Background: | UBE2T, HSPC150, PIG50, HSPC150 protein similar to ubiquitin-conjugating enzyme, ubiquitin conjugating enzyme, ubiquitin-conjugating enzyme E2T (putative), ubiquitin-conjugating enzyme E2T |
| Gene ID: | 29089 |
| NCBI Accession: | NP_054895 |
| Pathways: | Chromatin Binding |

Application Details

| | |
|--------------------|--|
| Application Notes: | Western Blot: Approx. 22 kDa band observed in lysates of cell lines K562, HEK293 and A549 (calculated MW of 22.5 kDa according to NP_054895.1). Recommended concentration: 0.1-0.3 µg/mL. Peptide ELISA: antibody detection limit dilution 1:16000. |
| Restrictions: | For Research Use only |

Handling

| | |
|--------------------|--|
| Format: | Liquid |
| Concentration: | 0.5 mg/mL |
| Buffer: | Supplied at 0.5 mg/mL in Tris saline, 0.02 % sodium azide, pH 7.3 with 0.5 % bovine serum albumin. |
| Preservative: | Sodium azide |
| Precaution of Use: | This product contains Sodium azide: a POISONOUS AND HAZARDOUS SUBSTANCE which should be handled by trained staff only. |
| Handling Advice: | Minimize freezing and thawing. |
| Storage: | -20 °C |
| Storage Comment: | Aliquot and store at -20°C, with minimal freeze/thawing. A working aliquot may be refrigerated at 4°C for a few weeks and still remain viable. |



Western Blotting

Image 1. ABIN184897 (0.1 μ g/ml) staining of K562 lysate (35 μ g protein in RIPA buffer). Primary incubation was 1 hour. Detected by chemiluminescence.