

Datasheet for ABIN184913  
**anti-KAP1 antibody (C-Term)**[Go to Product page](#)

6 Images

1 Publication

## Overview

Quantity:	100 µg
Target:	KAP1 (TRIM28)
Binding Specificity:	C-Term
Reactivity:	Human
Host:	Goat
Clonality:	Polyclonal
Conjugate:	This KAP1 antibody is un-conjugated
Application:	ELISA, Immunohistochemistry (IHC), Immunofluorescence (IF), Flow Cytometry (FACS)

## Product Details

Purpose:	KAP1 / TRIM28
Immunogen:	Peptide with sequence C-SSQELSGGPGDGP, from the C Terminus of the protein sequence according to NP_005753.1.
Sequence:	SSQELSGGPG DGP
Isotype:	IgG
Cross-Reactivity:	Human, Mouse
Purification:	Purified from goat serum by ammonium sulphate precipitation followed by antigen affinity chromatography using the immunizing peptide.
Grade:	Verified

## Target Details

Target:	KAP1 (TRIM28)
Alternative Name:	TRIM28 ( <a href="#">TRIM28 Products</a> )
Background:	TRIM28, KAP1, TF1B, RNF96, TIF1B, tripartite motif-containing 28, KRAB-associated protein 1, nuclear corepressor KAP-1, transcriptional intermediary factor 1-beta, FLJ29029, KRAB-associated protein 1, tripartite motif-containing 28 protein
Gene ID:	10155
NCBI Accession:	<a href="#">NP_005753</a>
Pathways:	<a href="#">Hedgehog Signaling</a> , <a href="#">Positive Regulation of Response to DNA Damage Stimulus</a>

## Application Details

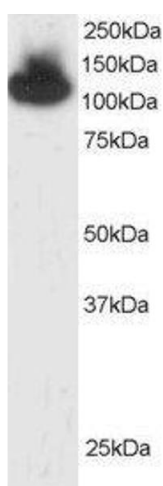
Application Notes:	Immunohistochemistry: In paraffin embedded Human Breast shows nuclear staining in epithelial duct cells. Recommended concentration: 2-4 µg/mL. Peptide ELISA: antibody detection limit dilution 1:2000.
Comment:	<b>Immunofluorescence:</b> Strong expression of the protein seen in the nuclei of HeLa and U2OS cells. Recommended concentration: 10µg/ml. <b>Flow Cytometry:</b> Flow cytometric analysis of HeLa cells. Recommended concentration: 10u
Restrictions:	For Research Use only

## Handling

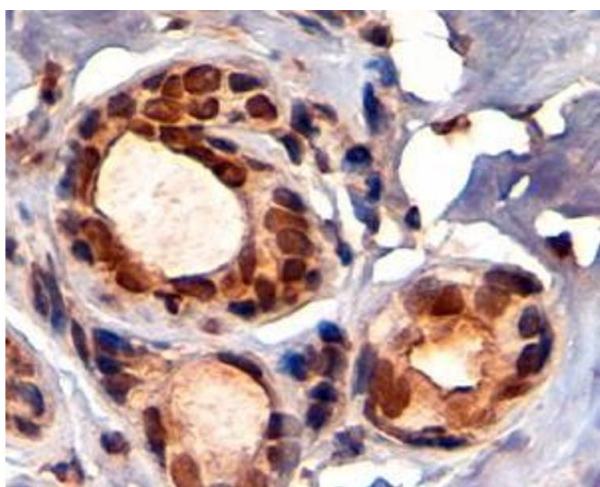
Format:	Liquid
Concentration:	0.5 mg/mL
Buffer:	Supplied at 0.5 mg/mL in Tris saline, 0.02 % sodium azide, pH 7.3 with 0.5 % bovine serum albumin.
Preservative:	Sodium azide
Precaution of Use:	This product contains Sodium azide: a POISONOUS AND HAZARDOUS SUBSTANCE which should be handled by trained staff only.
Handling Advice:	Minimize freezing and thawing.
Storage:	-20 °C
Storage Comment:	Aliquot and store at -20°C, with minimal freeze/thawing. A working aliquot may be refrigerated at 4°C for a few weeks and still remain viable.

Product cited in: Yokoe, Toyama, Okugawa, Tanaka, Ohi, Inoue, Mohri, Miki, Kusunoki: "KAP1 is associated with peritoneal carcinomatosis in gastric cancer." in: **Annals of surgical oncology**, Vol. 17, Issue 3, pp. 821-8, (2010) ([PubMed](#)).

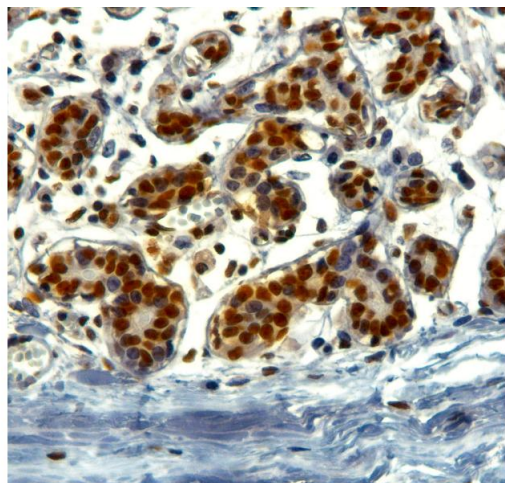
## Images



**Image 1.** ABIN184913 (2 µg/mL) staining of HepG2 lysate (35 µg protein in RIPA buffer). Primary incubation was 1 hour. Detected by chemiluminescence.



**Image 2.** ABIN184913 (4 µg/mL) staining of paraffin embedded Human Breast. Steamed antigen retrieval with citrate buffer pH 6, HRP-staining.



### Immunohistochemistry

**Image 3.** ABIN184913 (2µg/ml) staining of paraffin embedded Human Breast. Steamed antigen retrieval with Tris/EDTA buffer pH 9, HRP-staining.

## Images

---

Please check the [product details page](#) for more images. Overall 6 images are available for ABIN184913.