

Datasheet for ABIN184919
anti-RNF39 antibody (C-Term)

2 Images

[Go to Product page](#)

Overview

Quantity:	100 µg
Target:	RNF39
Binding Specificity:	C-Term
Reactivity:	Human
Host:	Goat
Clonality:	Polyclonal
Conjugate:	This RNF39 antibody is un-conjugated
Application:	Western Blotting (WB), ELISA, Immunohistochemistry (IHC)

Product Details

Purpose:	RNF39 / LIRF
Immunogen:	Peptide with sequence CDPRAPLRIVPAES, from the C Terminus of the protein sequence according to NP_079512.1, NP_739575.1.
Sequence:	CDRAPLRIV PAES
Isotype:	IgG
Specificity:	This antibody is expected to recognize 2 of the 3 reported isoforms (NP_079512.1 and NP_739575.1 but not NP_739576.1)
Cross-Reactivity:	Human, Pig, Rat
Purification:	Purified from goat serum by ammonium sulphate precipitation followed by antigen affinity chromatography using the immunizing peptide.

Product Details

Grade: Verified

Target Details

Target: RNF39

Alternative Name: RNF39 ([RNF39 Products](#))

Background: RNF39, LIRF, ring finger protein 39, HZFW1, HZFW1 protein, LTP (long-term potentiation) induced RING finger protein, DADB-60011.8, HZF, HZFW

Gene ID: 80352, 171387

NCBI Accession: [NP_079512](#), [NP_739575](#)

Application Details

Application Notes: Immunohistochemistry: Paraffin embedded Human Small Intestine. Recommended concentration: 10 µg/mL.
Western Blot: Approx 40 kDa band observed in Human Brain lysates (predicted MWs of 41 kDa and 48 kDa according to NP_079512.1 and NP_739575.1). Recommended for use at 1-3 µg/mL.
Peptide ELISA: antibody detection limit dilution 1:16000.

Restrictions: For Research Use only

Handling

Format: Liquid

Concentration: 0.5 mg/mL

Buffer: Supplied at 0.5 mg/mL in Tris saline, 0.02 % sodium azide, pH 7.3 with 0.5 % bovine serum albumin.

Preservative: Sodium azide

Precaution of Use: This product contains Sodium azide: a POISONOUS AND HAZARDOUS SUBSTANCE which should be handled by trained staff only.

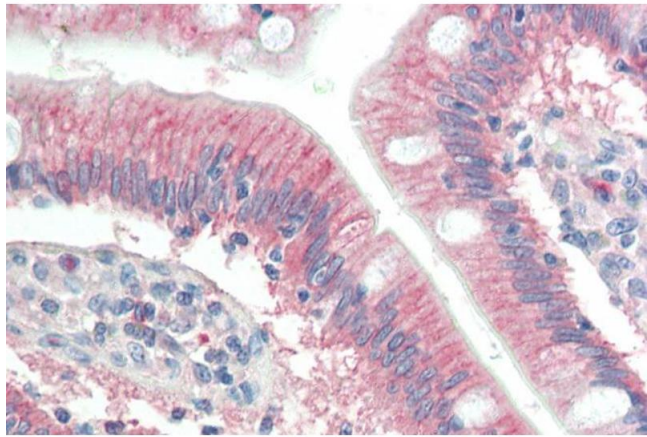
Handling Advice: Minimize freezing and thawing.

Storage: -20 °C

Storage Comment: Aliquot and store at -20°C, with minimal freeze/thawing. A working aliquot may be refrigerated

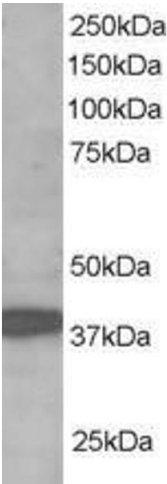
at 4°C for a few weeks and still remain viable.

Images



Immunohistochemistry

Image 1. ABIN184919 (10µg/ml) staining of paraffin embedded Human Small Intestine. Steamed antigen retrieval with citrate buffer pH 6, AP-staining.



Western Blotting

Image 2. ABIN184919 staining (1µg/ml) of Human Brain lysate (RIPA buffer, 35µg total protein per lane). Primary incubated for 1 hour. Detected by chemiluminescence.