

Datasheet for ABIN184920
anti-Midline 2 antibody (C-Term)

3 Images

[Go to Product page](#)

Overview

Quantity:	100 µg
Target:	Midline 2 (MID2)
Binding Specificity:	C-Term
Reactivity:	Human
Host:	Goat
Clonality:	Polyclonal
Conjugate:	This Midline 2 antibody is un-conjugated
Application:	ELISA, Immunohistochemistry (IHC)

Product Details

Purpose:	MID2 / TRIM1
Immunogen:	Peptide with sequence QESPYVSGMKTCH, from the C Terminus of the protein sequence according to NP_036348.2, NP_438112.2.
Sequence:	QESPYVSGMK TCH
Isotype:	IgG
Specificity:	This antibody is expected to recognise both human isoforms of this protein.
Cross-Reactivity:	Cow, Dog, Human, Mouse, Pig, Rat
Purification:	Purified from goat serum by ammonium sulphate precipitation followed by antigen affinity chromatography using the immunizing peptide.
Grade:	Verified

Target Details

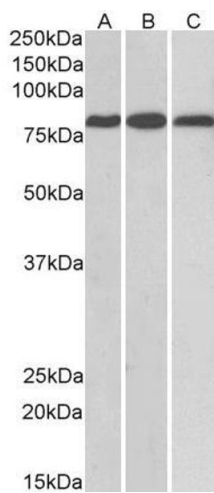
Target:	Midline 2 (MID2)
Alternative Name:	MID2 (MID2 Products)
Background:	MID2, TRIM1, midline 2, FXY2, midin 2, tripartite motif protein 1, RP6-191P20.2, FLJ37715, FLJ41813, FXY2, RNF60,
Gene ID:	11043, 23947
NCBI Accession:	NP_036348 , NP_438112

Application Details

Application Notes:	Immunohistochemistry: Paraffin embedded Human Kidney. Recommended concentration: 8 µg/mL. Peptide ELISA: antibody detection limit dilution 1:4000.
Restrictions:	For Research Use only

Handling

Format:	Liquid
Concentration:	0.5 mg/mL
Buffer:	Supplied at 0.5 mg/mL in Tris saline, 0.02 % sodium azide, pH 7.3 with 0.5 % bovine serum albumin.
Preservative:	Sodium azide
Precaution of Use:	This product contains Sodium azide: a POISONOUS AND HAZARDOUS SUBSTANCE which should be handled by trained staff only.
Handling Advice:	Minimize freezing and thawing.
Storage:	-20 °C
Storage Comment:	Aliquot and store at -20°C, with minimal freeze/thawing. A working aliquot may be refrigerated at 4°C for a few weeks and still remain viable.



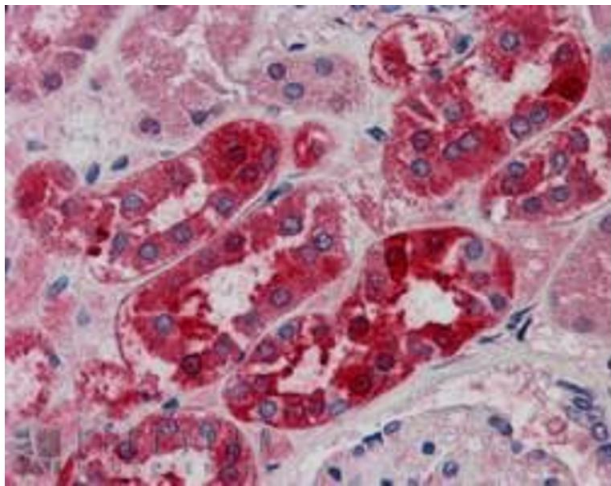
Western Blotting

Image 1. ABIN184920 (0.1µg/ml) staining of Mouse (A) and Rat (B) Heart, and Rat Kidney (C) lysates (35µg protein in RIPA buffer). Primary incubation was 1 hour. Detected by chemiluminescence.



Western Blotting

Image 2. ABIN184920 (1µg/ml) staining of mouse heart lysate (RIPA buffer, 35µg total protein per lane). Primary incubated for 1 hour. Detected by western blot using chemiluminescence.



Immunohistochemistry

Image 3. ABIN184920 (5µg/ml) staining of paraffin embedded Human Kidney. Steamed antigen retrieval with citrate buffer pH 6, AP-staining.