



[Go to Product page](#)

Datasheet for ABIN184922  
**anti-DPF1 antibody (C-Term)**

3 Images

Overview

Quantity:	100 µg
Target:	DPF1
Binding Specificity:	C-Term
Reactivity:	Human
Host:	Goat
Clonality:	Polyclonal
Conjugate:	This DPF1 antibody is un-conjugated
Application:	ELISA, Immunofluorescence (IF)

Product Details

Purpose:	Neuro-d4 / DPF1
Immunogen:	Peptide with sequence C-HLKEKASAYITLT, from the C Terminus of the protein sequence according to NP_001128627.1, NP_004638.2, NP_001128628.1.
Sequence:	HLKEKASAYI TLT
Isotype:	IgG
Specificity:	This antibody is expected to recognize all three reported isoforms (NP_001128627.1, NP_004638.2, NP_001128628.1).
Cross-Reactivity:	Cow, Human, Mouse, Rat
Purification:	Purified from goat serum by ammonium sulphate precipitation followed by antigen affinity chromatography using the immunizing peptide.

## Product Details

---

Grade: Verified

## Target Details

---

Target: DPF1

Alternative Name: DPF1 ([DPF1 Products](#))

Background: DPF1, NEUD4, neuro-d4, D4, zinc and double PHD fingers family 1, Neuro-d4 (rat) homolog, D4, zinc and double PHD fingers, family 1, MGC150428, MGC150429, BAF45b, OTTHUMP00000211615, neuro-d4 homolog

Gene ID: 8193, 29861, 50545

NCBI Accession: [NP\\_001128627](#), [NP\\_004638](#), [NP\\_001128628](#)

## Application Details

---

Application Notes: Western Blot: Preliminary experiments showed a band at approx 38-40 kDa in Human Cerebellum and Frontal Cortex lysates after 0.3-1 µg/mL antibody staining (calculated MW of 37.9 kDa according to NP\_001128628.1. Primary incubation 1 hour at room temperature. Peptide ELISA: antibody detection limit dilution 1:2000.

Comment: **Immunofluorescence:** Strong expression of the protein seen in the nuclei and weaker staining in the cytoplasm of MCF7 and U2OS cells. Recommended concentration: 10µg/ml.

Restrictions: For Research Use only

## Handling

---

Format: Liquid

Concentration: 0.5 mg/mL

Buffer: Supplied at 0.5 mg/mL in Tris saline, 0.02 % sodium azide, pH 7.3 with 0.5 % bovine serum albumin.

Preservative: Sodium azide

Precaution of Use: This product contains Sodium azide: a POISONOUS AND HAZARDOUS SUBSTANCE which should be handled by trained staff only.

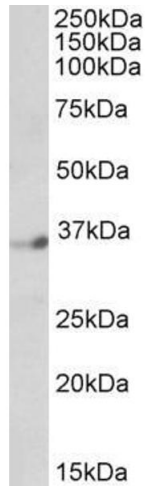
Handling Advice: Minimize freezing and thawing.

Storage: -20 °C

## Handling

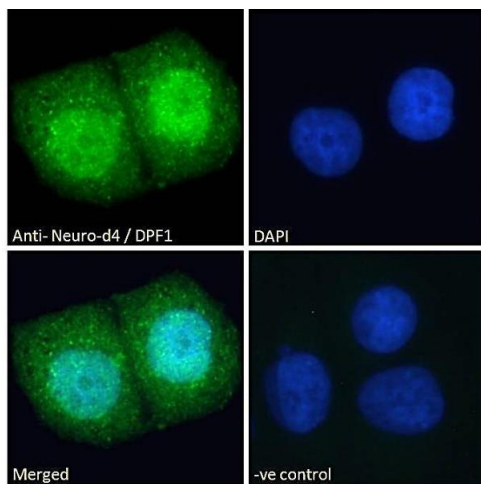
Storage Comment: Aliquot and store at -20°C, with minimal freeze/thawing. A working aliquot may be refrigerated at 4°C for a few weeks and still remain viable.

## Images



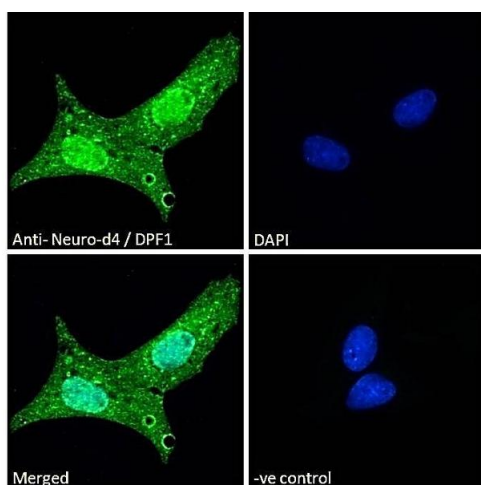
### Western Blotting

**Image 1.** ABIN184922(1µg/ml) staining of Human Brain (Cerebellum) lysate (35µg protein in RIPA buffer). Detected by chemiluminescence.



### Immunofluorescence

**Image 2.** ABIN184922 Immunofluorescence analysis of paraformaldehyde fixed MCF7 cells, permeabilized with 0.15% Triton. Primary incubation 1hr (10ug/ml) followed by Alexa Fluor 488 secondary antibody (2ug/ml), showing strong nuclear and weak cytoplasmic staining. The nuclear stain is DAPI (blue). Negative control: Unimmunized goat IgG (10ug/ml) followed by Alexa Fluor 488 secondary antibody (2ug/ml).



### Immunofluorescence

**Image 3.** ABIN184922 Immunofluorescence analysis of paraformaldehyde fixed U2OS cells, permeabilized with 0.15% Triton. Primary incubation 1hr (10ug/ml) followed by Alexa Fluor 488 secondary antibody (2ug/ml), showing strong nuclear and weak cytoplasmic staining. The nuclear stain is DAPI (blue). Negative control: Unimmunized goat IgG (10ug/ml) followed by Alexa Fluor 488 secondary antibody (2ug/ml).