



[Go to Product page](#)

Datasheet for ABIN1849262
anti-Grr1p antibody (N-Term)

2 Images

Overview

Quantity:	100 µL
Target:	Grr1p (GRR1)
Binding Specificity:	N-Term
Reactivity:	Human, Mouse, Rat
Host:	Rabbit
Clonality:	Polyclonal
Conjugate:	This Grr1p antibody is un-conjugated
Application:	ELISA, Western Blotting (WB), Immunofluorescence (fixed cells) (IF/ICC)

Product Details

Immunogen:	The antiserum was produced against synthesized peptide derived from N-terminal of human COT2.
Specificity:	Rabbit polyclonal antibody against COT2 protein.
Purification:	The antibody was affinity-purified from rabbit antiserum by affinity-chromatography using epitope-specific immunogen

Target Details

Target:	Grr1p (GRR1)
Alternative Name:	COT2 (GRR1 Products)
UniProt:	P24468

Application Details

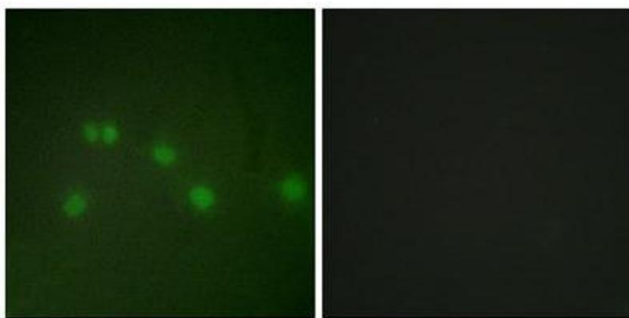
Restrictions: For Research Use only

Handling

Storage: -20 °C

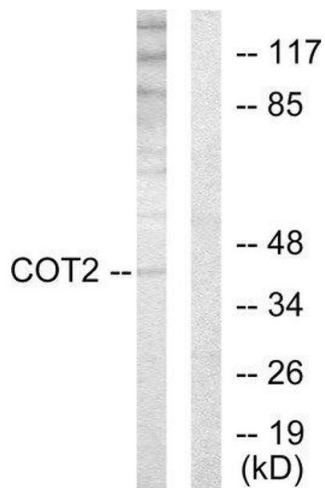
Storage Comment: Aliquot and store at -20 °C. Avoid repeated freeze/thaw cycles.

Images



Immunofluorescence

Image 1.



Western Blotting

Image 2.