

Datasheet for ABIN184933

anti-PSMF1 antibody (C-Term)

5 Images



[Go to Product page](#)

Overview

Quantity:	100 µg
Target:	PSMF1
Binding Specificity:	C-Term
Reactivity:	Human, Mouse, Rat
Host:	Goat
Clonality:	Polyclonal
Conjugate:	This PSMF1 antibody is un-conjugated
Application:	Western Blotting (WB), ELISA, Immunofluorescence (IF)

Product Details

Purpose:	PI31 / PSMF1 (Isoform 1)
Immunogen:	C-DHLPPPGYDDMYL
Sequence:	DHLPPPGYDD MYL
Isotype:	IgG
Specificity:	This antibody is expected to recognize isoform 1 (NP_006805.2 and NP_848693.2).
Cross-Reactivity:	Cow, Dog, Human, Mouse, Rat
Purification:	Purified from goat serum by ammonium sulphate precipitation followed by antigen affinity chromatography using the immunizing peptide.
Grade:	Verified

Target Details

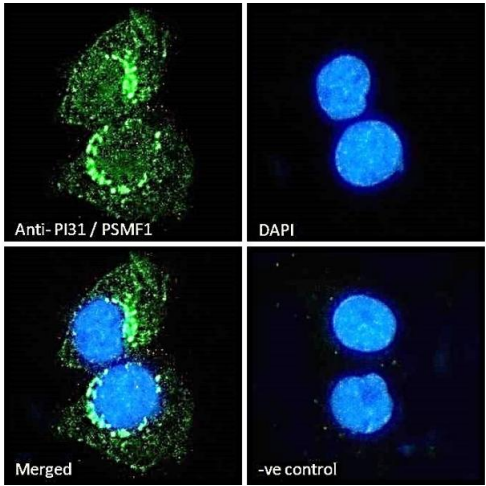
Target:	PSMF1
Alternative Name:	PSMF1 (PSMF1 Products)
Background:	PSMF1, PI31, proteasome (prosome, macropain) inhibitor subunit 1 (PI31), RP4-545L17.1, proteasome inhibitor hP131 subunit, proteasome inhibitor subunit 1
Gene ID:	9491, 228769
NCBI Accession:	NP_006805
Pathways:	Mitotic G1-G1/S Phases , DNA Replication , Synthesis of DNA

Application Details

Application Notes:	Western Blot: Approx 30 kDa band observed in lysates of cell line HEK293, approx 30-32 kDa in lysates of cell lines K562, NIH3T3, Neuro2a and KNRK, and approx. 35 kDa in lysates of cell line LNCaP (calculated MW of 29.8 kDa according to Human NP_006805.2 an Peptide ELISA: antibody detection limit dilution 1:32000.
Comment:	Immunofluorescence: Strong expression of the protein seen in the endoplasmic reticulum and cytoplasm of A431 cells. Recommended concentration: 10µg/ml. Flow Cytometry: A customer reported weak staining of A431 cells at
Restrictions:	For Research Use only

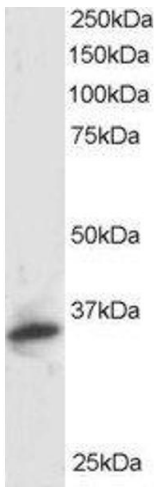
Handling

Format:	Liquid
Concentration:	0.5 mg/mL
Buffer:	Supplied at 0.5 mg/mL in Tris saline, 0.02 % sodium azide, pH 7.3 with 0.5 % bovine serum albumin.
Preservative:	Sodium azide
Precaution of Use:	This product contains Sodium azide: a POISONOUS AND HAZARDOUS SUBSTANCE which should be handled by trained staff only.
Handling Advice:	Minimize freezing and thawing.
Storage:	-20 °C
Storage Comment:	Aliquot and store at -20°C, with minimal freeze/thawing. A working aliquot may be refrigerated at 4°C for a few weeks and still remain viable.



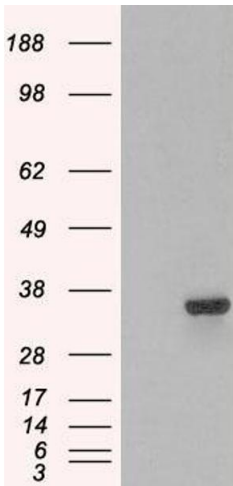
Immunofluorescence

Image 1. (ABIN184933) Immunofluorescence analysis of paraformaldehyde fixed A431 cells, permeabilized with 0.15 % Triton. Primary incubation 1hr (10 µg/mL) followed by Alexa Fluor 488 secondary antibody (2 µg/mL), showing endoplasmic reticulum and cytoplasmic staining. Th



Western Blotting

Image 2. ABIN184933 staining (1µg/ml) of Human Kidney lysate (RIPA buffer, 30µg total protein per lane). Primary incubated for 1 hour. Detected by western blot using chemiluminescence.



Western Blotting

Image 3. HEK293 overexpressing PSMF1 (ABIN5437750) and probed with ABIN184933 (mock transfection in first lane).

Please check the [product details page](#) for more images. Overall 5 images are available for ABIN184933.