

Datasheet for ABIN184938
anti-STRADB antibody (C-Term)[Go to Product page](#)

4 Images

Overview

Quantity:	100 µg
Target:	STRADB
Binding Specificity:	C-Term
Reactivity:	Human
Host:	Goat
Clonality:	Polyclonal
Conjugate:	This STRADB antibody is un-conjugated
Application:	Western Blotting (WB), ELISA, Immunohistochemistry (IHC), Immunofluorescence (IF)

Product Details

Purpose:	ALS2CR2 / ILPIP
Immunogen:	Peptide with sequence CDFPDEKDSYWEF, from the C Terminus of the protein sequence according to NP_061041.2, AAF71042.1.
Sequence:	CDFPDEKDSY WEF
Isotype:	IgG
Specificity:	This is expected to recognise both human isoforms: ILPIP-alpha (NP_061041.2) and ILPIP-beta (AAF71042.1).
Cross-Reactivity:	Cow, Dog, Human
Purification:	Purified from goat serum by ammonium sulphate precipitation followed by antigen affinity chromatography using the immunizing peptide.

Product Details

Grade: Verified

Target Details

Target: STRADB

Alternative Name: STRADB ([STRADB Products](#))

Background: STRADB, ALS2CR2, ILPIP, PAPK, ILPIPA, CALS-21, PRO1038, amyotrophic lateral sclerosis 2 (juvenile) chromosome region, candidate 2, ILP-interacting protein ILPIPA, STE20-related kinase adaptor beta, STRAD beta, pseudokinase ALS2CR2

Gene ID: 55437

NCBI Accession: [NP_061041](#)

Pathways: [AMPK Signaling](#)

Application Details

Application Notes: Immunohistochemistry: In paraffin embedded Human Heart shows staining of myocardial fibres in transverse section. Recommended concentration: 3-5 µg/mL.
Western Blot: Approx 35 kDa band observed in Human Heart, Liver and Muscle lysates (calculated MW of 47.0 kDa according to NP_061041.2 (alpha isoform) and 31.2 kDa according to AAF71042.1 (beta isoform). In transfected HEK293 transiently expressing ILPIP a
Peptide ELISA: antibody detection limit dilution 1:32000.

Comment: **Immunofluorescence:** Strong expression of the protein seen in the nuclei and cytoplasm of U251 cells. Recommended concentration: 10µg/ml.

Restrictions: For Research Use only

Handling

Format: Liquid

Concentration: 0.5 mg/mL

Buffer: Supplied at 0.5 mg/mL in Tris saline, 0.02 % sodium azide, pH 7.3 with 0.5 % bovine serum albumin.

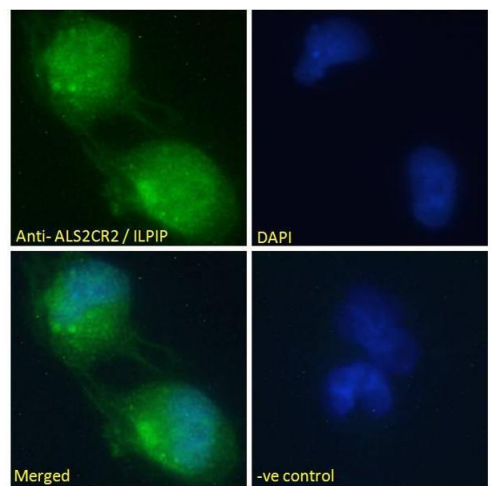
Preservative: Sodium azide

Precaution of Use: This product contains Sodium azide: a POISONOUS AND HAZARDOUS SUBSTANCE which should be handled by trained staff only.

Handling

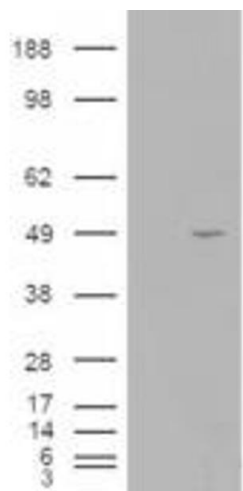
Handling Advice:	Minimize freezing and thawing.
Storage:	-20 °C
Storage Comment:	Aliquot and store at -20°C, with minimal freeze/thawing. A working aliquot may be refrigerated at 4°C for a few weeks and still remain viable.

Images



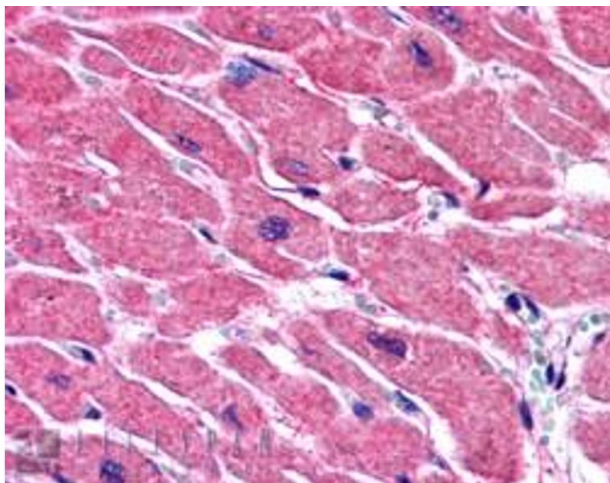
Immunofluorescence

Image 1. ABIN184938 Immunofluorescence analysis of paraformaldehyde fixed U251 cells, permeabilized with 0.15% Triton. Primary incubation 1hr (10ug/ml) followed by Alexa Fluor 488 secondary antibody (2ug/ml), showing nuclear and cytoplasmic staining. The nuclear stain is DAPI (blue). Negative control: Unimmunized goat IgG (10ug/ml) followed by Alexa Fluor 488 secondary antibody (2ug/ml).



Western Blotting

Image 2. HEK293 overexpressing ILPIP (ABIN5392236) and probed with ABIN184938 (mock transfection in first lane).



Immunohistochemistry

Image 3. ABIN184938 (3.8µg/ml) staining of paraffin embedded Human Heart. Steamed antigen retrieval with citrate buffer pH 6, AP-staining.

Please check the [product details page](#) for more images. Overall 4 images are available for ABIN184938.