



[Go to Product page](#)

Datasheet for ABIN184942

## anti-NIF3L1 antibody (C-Term)

### 2 Images

#### Overview

Quantity:	100 µg
Target:	NIF3L1
Binding Specificity:	C-Term
Reactivity:	Human
Host:	Goat
Clonality:	Polyclonal
Conjugate:	This NIF3L1 antibody is un-conjugated
Application:	ELISA, Western Blotting (WB), Immunohistochemistry (IHC)

#### Product Details

Purpose:	ALS2CR1 / NIF3L1
Immunogen:	Peptide with sequence C-ILSETDRDPLQVV, from the C Terminus of the protein sequence according to NP_001129511.1, NP_068596.2
Sequence:	ILSETDRDPL QVV
Isotype:	IgG
Specificity:	This antibody is expected to recognise both reported isoforms. Variants (NP_001135827.1, NP_068596.2) encode the same isoform.
Cross-Reactivity:	Human, Mouse
Purification:	Purified from goat serum by ammonium sulphate precipitation followed by antigen affinity chromatography using the immunizing peptide.

## Product Details

---

Grade: Verified

## Target Details

---

Target: NIF3L1

Alternative Name: NIF3L1 ([NIF3L1 Products](#))

Background: NIF3L1, ALS2CR1, NIF3 NGG1 interacting factor 3-like 1 (S. pombe), CALS-7, MDS015, NIF3 (Ngg1 interacting factor 3, S.pombe homolog)-like 1, amyotrophic lateral sclerosis 2 (juvenile) chromosome region, candidate 1, NIF3 NGG1 interacting factor 3-like 1,

Gene ID: 60491, 65102

NCBI Accession: [NP\\_001129511](#), [NP\\_068596](#)

## Application Details

---

Application Notes: Immunohistochemistry: In paraffin embedded Human Breast shows strong cytoplasm staining in epithelial and myoepithelial duct cells. Recommended concentration, 2-4 µg/mL.  
Western Blot: Approx 40 kDa band seen in Human Heart and Human Testis extracts [Predicted MW of approx. 39 kDa according to NP\_068596]. Recommended for use at 0.2-1 µg/mL.  
Peptide ELISA: antibody detection limit dilution 1:32000.

Restrictions: For Research Use only

## Handling

---

Format: Liquid

Concentration: 0.5 mg/mL

Buffer: Supplied at 0.5 mg/mL in Tris saline, 0.02 % sodium azide, pH 7.3 with 0.5 % bovine serum albumin.

Preservative: Sodium azide

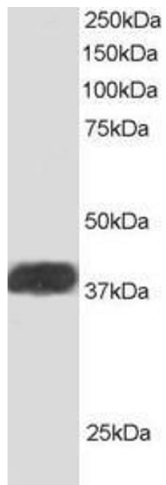
Precaution of Use: This product contains Sodium azide: a POISONOUS AND HAZARDOUS SUBSTANCE which should be handled by trained staff only.

Handling Advice: Minimize freezing and thawing.

Storage: -20 °C

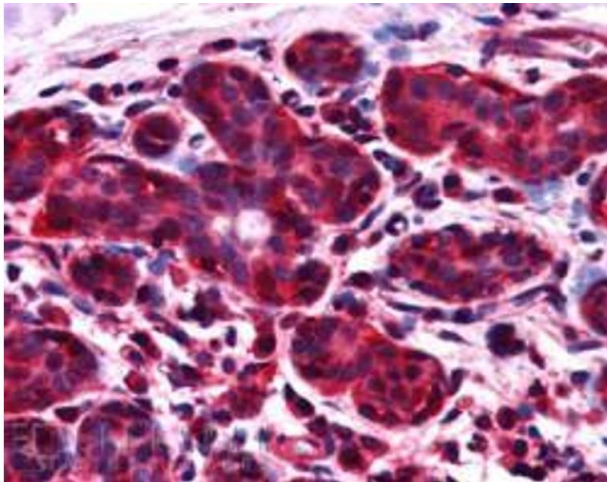
Storage Comment: Aliquot and store at -20°C, with minimal freeze/thawing. A working aliquot may be refrigerated

at 4°C for a few weeks and still remain viable.



### Western Blotting

**Image 1.** ABIN184942 staining (1 $\mu$ g/ml) of Human Heart lysate (RIPA buffer, 30 $\mu$ g total protein per lane). Primary incubated for 1 hour. Detected by western blot using chemiluminescence.



### Immunohistochemistry

**Image 2.** ABIN184942 (2.5 $\mu$ g/ml) staining of paraffin embedded Human Breast. Steamed antigen retrieval with citrate buffer pH 6, AP-staining.