

Datasheet for ABIN184946  
**anti-CLPP antibody (C-Term)**

## 3 Images

[Go to Product page](#)

## Overview

Quantity:	100 µg
Target:	CLPP
Binding Specificity:	C-Term
Reactivity:	Human
Host:	Goat
Clonality:	Polyclonal
Conjugate:	This CLPP antibody is un-conjugated
Application:	Western Blotting (WB), ELISA, Immunohistochemistry (IHC)

## Product Details

Purpose:	CLPP
Immunogen:	Peptide with sequence C-EAAPAAEPVPAST, from the C Terminus of the protein sequence according to NP_006003.1.
Sequence:	EAAPAAEPVP AST
Isotype:	IgG
Cross-Reactivity:	Human
Purification:	Purified from goat serum by ammonium sulphate precipitation followed by antigen affinity chromatography using the immunizing peptide.
Grade:	Verified

## Target Details

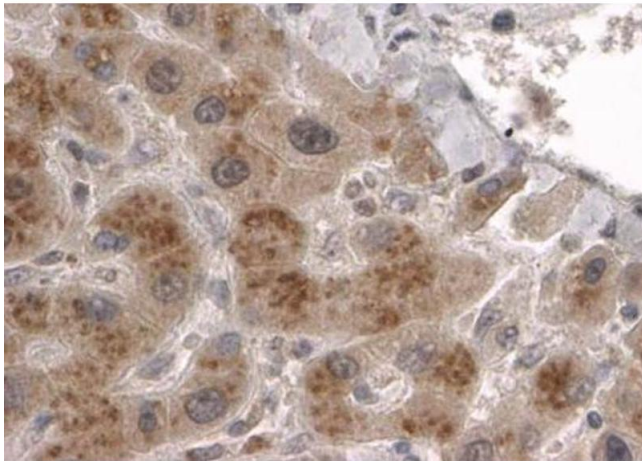
Target:	CLPP
Alternative Name:	CLPP ( <a href="#">CLPP Products</a> )
Background:	CLPP, ClpP caseinolytic protease, ATP-dependent, proteolytic subunit homolog (E. coli), ATP-dependent proteolytic subunit E.coli homolog, ATP-dependent protease ClpAP (E. coli), proteolytic subunit, human, ClpP (caseinolytic protease, ATP-dependent, prote
Gene ID:	8192
NCBI Accession:	<a href="#">NP_006003</a>

## Application Details

Application Notes:	Immunohistochemistry: In paraffin embedded Human Liver shows cytoplasmic staining consistent with mitochondria in hepatocytes. Recommended concentration, 2-4 µg/mL. Western Blot: Approx 26 kDa band observed in Human Heart (calculated MW of 30.2 kDa according to NP_006003.1). Recommended for use at 1-3 µg/mL. Peptide ELISA: antibody detection limit dilution 1:1000.
Restrictions:	For Research Use only

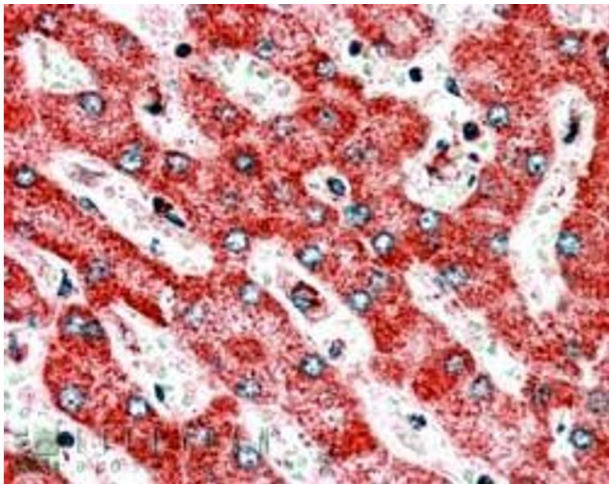
## Handling

Format:	Liquid
Concentration:	0.5 mg/mL
Buffer:	Supplied at 0.5 mg/mL in Tris saline, 0.02 % sodium azide, pH 7.3 with 0.5 % bovine serum albumin.
Preservative:	Sodium azide
Precaution of Use:	This product contains Sodium azide: a POISONOUS AND HAZARDOUS SUBSTANCE which should be handled by trained staff only.
Handling Advice:	Minimize freezing and thawing.
Storage:	-20 °C
Storage Comment:	Aliquot and store at -20°C, with minimal freeze/thawing. A working aliquot may be refrigerated at 4°C for a few weeks and still remain viable.

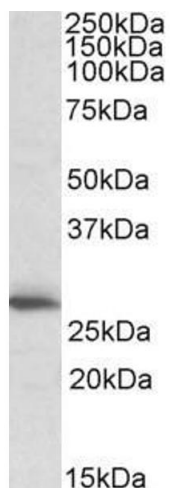


#### Immunohistochemistry

**Image 1.** ABIN184946 (2µg/ml) staining of paraffin embedded Human Liver. Steamed antigen retrieval with citrate buffer pH 6, HRP-staining.



**Image 2.** ABIN184946 (2.5 µg/mL) staining of paraffin embedded Human Liver. Steamed antigen retrieval with citrate buffer pH 6, AP-staining.



#### Western Blotting

**Image 3.** ABIN184946 (1µg/ml) staining of Human Heart lysate (35µg protein in RIPA buffer). Primary incubation was 1 hour. Detected by chemiluminescence.