



[Go to Product page](#)

Datasheet for ABIN184949
anti-TRIM8 antibody (C-Term)

6 Images

Overview

Quantity:	100 µg
Target:	TRIM8
Binding Specificity:	C-Term
Reactivity:	Human
Host:	Goat
Clonality:	Polyclonal
Conjugate:	This TRIM8 antibody is un-conjugated
Application:	ELISA, Immunohistochemistry (IHC), Immunofluorescence (IF), Flow Cytometry (FACS)

Product Details

Purpose:	GERP / TRIM8
Immunogen:	Peptide with sequence C-YGQPSTKHYVTS, from the C Terminus of the protein sequence according to NP_112174.2.
Sequence:	YGQPSTKHYV TS
Isotype:	IgG
Cross-Reactivity:	Cow, Human, Mouse, Rat
Purification:	Purified from goat serum by ammonium sulphate precipitation followed by antigen affinity chromatography using the immunizing peptide.
Grade:	Verified

Target Details

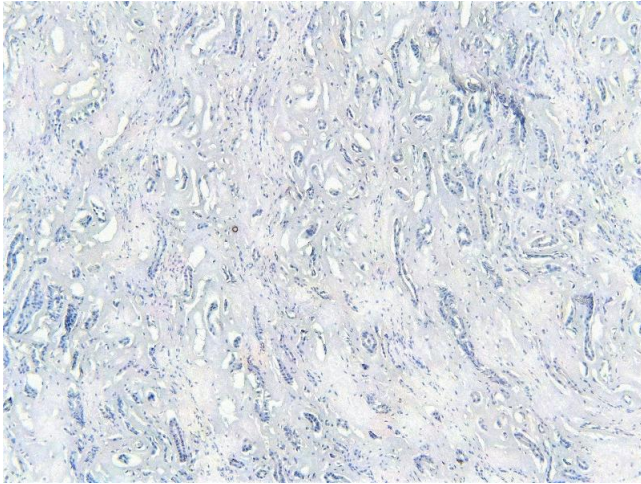
Target:	TRIM8
Alternative Name:	TRIM8 (TRIM8 Products)
Background:	TRIM8, tripartite motif-containing 8, GERP, RNF27, ring finger protein 27, tripartite motif protein TRIM8, glioblastoma expressed ring finger protein, RP11-47A8.4,
Gene ID:	81603, 93679
NCBI Accession:	NP_112174

Application Details

Application Notes:	Immunohistochemistry: Paraffin embedded Human Kidney. Recommended concentration: 4 µg/mL. Peptide ELISA: antibody detection limit dilution 1:128000.
Comment:	Immunofluorescence: Strong expression of the protein seen in the nuclei and cytoplasm of A431 and U2OS cells. Recommended concentration: 10µg/ml. Flow Cytometry: Flow cytometric analysis of A431 cells. Recommended conc
Restrictions:	For Research Use only

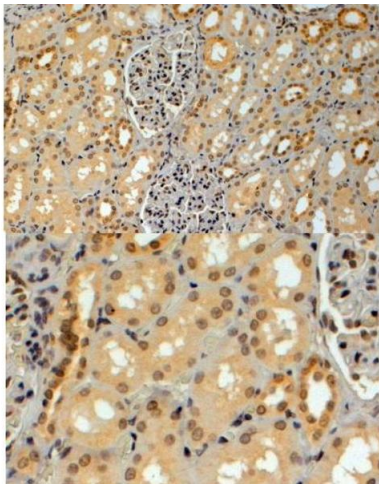
Handling

Format:	Liquid
Concentration:	0.5 mg/mL
Buffer:	Supplied at 0.5 mg/mL in Tris saline, 0.02 % sodium azide, pH 7.3 with 0.5 % bovine serum albumin.
Preservative:	Sodium azide
Precaution of Use:	This product contains Sodium azide: a POISONOUS AND HAZARDOUS SUBSTANCE which should be handled by trained staff only.
Handling Advice:	Minimize freezing and thawing.
Storage:	-20 °C
Storage Comment:	Aliquot and store at -20°C, with minimal freeze/thawing. A working aliquot may be refrigerated at 4°C for a few weeks and still remain viable.



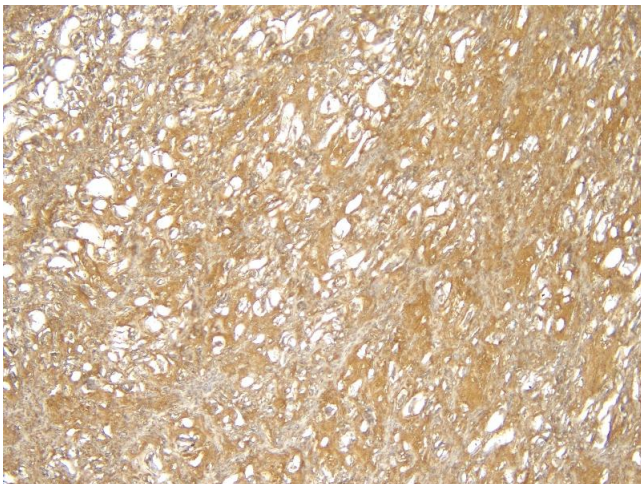
Immunohistochemistry

Image 1. (ABIN184949) Negative Control showing staining of paraffin embedded Human Kidney, with no primary antibody.



Immunohistochemistry

Image 2. ABIN184949 (4µg/ml) staining of paraffin embedded Human Kidney. Steamed antigen retrieval with citrate buffer pH 6, HRP-staining.



Immunohistochemistry

Image 3. (ABIN184949) (4 µg/mL) staining of paraffin embedded Human Kidney. Heat induced antigen retrieval with citrate buffer pH 6, HRP-staining.

Please check the [product details page](#) for more images. Overall 6 images are available for ABIN184949.