

Datasheet for ABIN184957
anti-CARD11 antibody (C-Term)

2 Images

[Go to Product page](#)

Overview

Quantity:	100 µg
Target:	CARD11
Binding Specificity:	C-Term
Reactivity:	Human
Host:	Goat
Clonality:	Polyclonal
Conjugate:	This CARD11 antibody is un-conjugated
Application:	Western Blotting (WB), Immunohistochemistry (IHC), ELISA

Product Details

Purpose:	CARD11
Immunogen:	Peptide with sequence C-QRKTIWVDEDQL, from the C Terminus of the protein sequence according to NP_115791.3.
Sequence:	QRKTIWVDED QL
Isotype:	IgG
Cross-Reactivity:	Cow, Dog, Human, Mouse
Purification:	Purified from goat serum by ammonium sulphate precipitation followed by antigen affinity chromatography using the immunizing peptide.
Grade:	Verified

Target Details

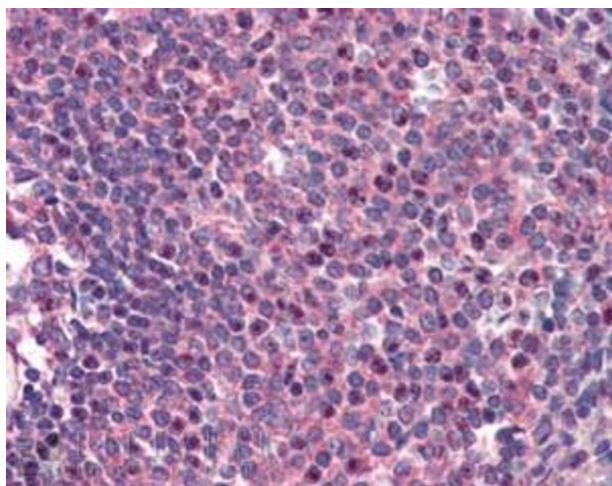
Target:	CARD11
Alternative Name:	CARD11 (CARD11 Products)
Background:	CARD11, caspase recruitment domain family, member 11, BIMP3, CARMA1, MGC133069, card-maguk protein 1, bcl10-interacting maguk protein 3
Gene ID:	84433, 108723
NCBI Accession:	NP_115791
Pathways:	TCR Signaling , Fc-epsilon Receptor Signaling Pathway , BCR Signaling

Application Details

Application Notes:	Immunohistochemistry: In paraffin embedded Human Spleen shows nuclear staining. Recommended concentration: 2-5 µg/mL. Western Blot: Approx 150+65 kDa bands observed in lysates of cell line Jurkat (calculated MW of 133 kDa according to NP_115791.2). Recommended concentration: 1-3 µg/mL. An additional band of unknown identity was also consistently observed at 60 kDa. This band Peptide ELISA: antibody detection limit dilution 1:32000.
Restrictions:	For Research Use only

Handling

Format:	Liquid
Concentration:	0.5 mg/mL
Buffer:	Supplied at 0.5 mg/mL in Tris saline, 0.02 % sodium azide, pH 7.3 with 0.5 % bovine serum albumin.
Preservative:	Sodium azide
Precaution of Use:	This product contains Sodium azide: a POISONOUS AND HAZARDOUS SUBSTANCE which should be handled by trained staff only.
Handling Advice:	Minimize freezing and thawing.
Storage:	-20 °C
Storage Comment:	Aliquot and store at -20°C, with minimal freeze/thawing. A working aliquot may be refrigerated at 4°C for a few weeks and still remain viable.



Immunohistochemistry

Image 1. ABIN184957 (2µg/ml) staining of paraffin embedded Human Spleen. Steamed antigen retrieval with citrate buffer pH 6, AP-staining.



Western Blotting

Image 2. ABIN184957 staining (1µg/ml) of human Jurkat cells (RIPA buffer, 35µg total protein per lane). Primary incubated for 1 hour. Detected by western blot using chemiluminescence.