



Datasheet for ABIN1849648  
**anti-SPR1 antibody (C-Term)**



[Go to Product page](#)

2 Images

Overview

Quantity:	100 µL
Target:	SPR1 (PSORS1C2)
Binding Specificity:	C-Term
Reactivity:	Human, Mouse
Host:	Rabbit
Clonality:	Polyclonal
Conjugate:	This SPR1 antibody is un-conjugated
Application:	ELISA, Western Blotting (WB)

Product Details

Immunogen:	The antiserum was produced against synthesized peptide derived from C-terminal of human SPR1.
Specificity:	Rabbit polyclonal antibody against SPR1 protein.
Purification:	The antibody was affinity-purified from rabbit antiserum by affinity-chromatography using epitope-specific immunogen

Target Details

Target:	SPR1 (PSORS1C2)
Alternative Name:	SPR1 ( <a href="#">PSORS1C2 Products</a> )
UniProt:	<a href="#">Q15743</a>

## Application Details

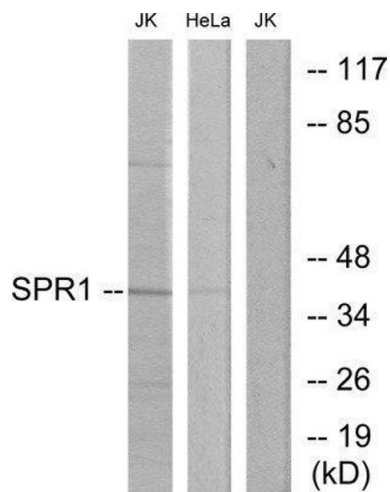
Restrictions: For Research Use only

## Handling

Storage: -20 °C

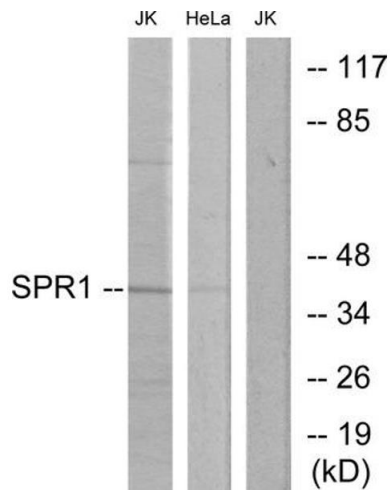
Storage Comment: Aliquot and store at -20 °C. Avoid repeated freeze/thaw cycles.

## Images



### Western Blotting

**Image 1.**



### Western Blotting

**Image 2.** Western blot analysis of extracts from Jurkat cells and HeLa cells, using SPR1 antibody.