



[Go to Product page](#)

Datasheet for ABIN184966

anti-SNX15 antibody (C-Term)

1 Image

Overview

Quantity:	100 µg
Target:	SNX15
Binding Specificity:	C-Term
Reactivity:	Human
Host:	Goat
Clonality:	Polyclonal
Conjugate:	This SNX15 antibody is un-conjugated
Application:	ELISA, Western Blotting (WB)

Product Details

Purpose:	SNX15
Immunogen:	Peptide with sequence C-EEILRLHLSQLPP, from the C Terminus of the protein sequence according to NP_037438.2, NP_680086.2.
Sequence:	EEILRLHLSQ LPP
Isotype:	IgG
Specificity:	This antibody is expected to recognise both Human isoforms according to NP_037438.2 and NP_680086.2.
Cross-Reactivity:	Human
Purification:	Purified from goat serum by ammonium sulphate precipitation followed by antigen affinity chromatography using the immunizing peptide.

Product Details

Grade: Verified

Target Details

Target: SNX15

Alternative Name: SNX15 ([SNX15 Products](#))

Background: SNX15, sorting nexin 15, HSAF001435, clone iota unknown protein, hCG_23393, OTTHUMP00000035515

Gene ID: 29907

NCBI Accession: [NP_037438](#), [NP_680086](#)

Application Details

Application Notes: Western Blot: Approx 48 kDa band seen in Human Kidney lysates and in lysates of cell line HEK293 (calculated MW 38.2 kDa according to NP_037438.2). Recommended for use at 0.2-1 µg/mL. Note: A single approx 30-35 kDa band (probably representing the shorter is Peptide ELISA: antibody detection limit dilution 1:8000.

Restrictions: For Research Use only

Handling

Format: Liquid

Concentration: 0.5 mg/mL

Buffer: Supplied at 0.5 mg/mL in Tris saline, 0.02 % sodium azide, pH 7.3 with 0.5 % bovine serum albumin.

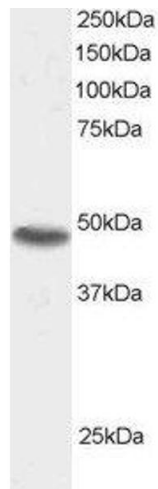
Preservative: Sodium azide

Precaution of Use: This product contains Sodium azide: a POISONOUS AND HAZARDOUS SUBSTANCE which should be handled by trained staff only.

Handling Advice: Minimize freezing and thawing.

Storage: -20 °C

Storage Comment: Aliquot and store at -20°C, with minimal freeze/thawing. A working aliquot may be refrigerated at 4°C for a few weeks and still remain viable.



Western Blotting

Image 1. ABIN184966 staining (0.5 μ g/ml) of 293 lysate (RIPA buffer, 30 μ g total protein per lane). Primary incubated for 1 hour. Detected by western blot using chemiluminescence.