

Datasheet for ABIN184972
anti-EVC2 antibody (C-Term)[Go to Product page](#)

1 Image

Overview

Quantity:	100 µg
Target:	EVC2
Binding Specificity:	C-Term
Reactivity:	Human
Host:	Goat
Clonality:	Polyclonal
Conjugate:	This EVC2 antibody is un-conjugated
Application:	ELISA, Immunohistochemistry (IHC)

Product Details

Purpose:	EVC2 / Limbin
Immunogen:	Peptide with sequence C-LNAKKAMRALGMD, from the C Terminus of the protein sequence according to NP_667338.3, NP_001159608.1.
Sequence:	LNAKKAMRAL GMD
Isotype:	IgG
Specificity:	This antibody is expected to recognise isoform 1 (NP_667338.3) and isoform 2 (NP_001159608.1).
Cross-Reactivity:	Human
Purification:	Purified from goat serum by ammonium sulphate precipitation followed by antigen affinity chromatography using the immunizing peptide.

Product Details

Grade: Verified

Target Details

Target: EVC2

Alternative Name: EVC2 ([EVC2 Products](#))

Background: EVC2, LBN, LIMBIN, Ellis van Creveld syndrome 2 (limbin), limbin

Gene ID: 132884

NCBI Accession: [NP_667338](#), [NP_001159608](#)

Pathways: [Hedgehog Signaling](#)

Application Details

Application Notes: Immunohistochemistry: In paraffin embedded Human Placenta shows strong staining of the cytotrophoblasts. Recommended concentration, 2-4 µg/mL.

Western Blot: Consistent band observed in 293 and human heart at approx 75 kDa with 1 hour incubation of primary at 0.5 µg/mL.

Peptide ELISA: antibody detection limit dilution 1:16000.

Restrictions: For Research Use only

Handling

Format: Liquid

Concentration: 0.5 mg/mL

Buffer: Supplied at 0.5 mg/mL in Tris saline, 0.02 % sodium azide, pH 7.3 with 0.5 % bovine serum albumin.

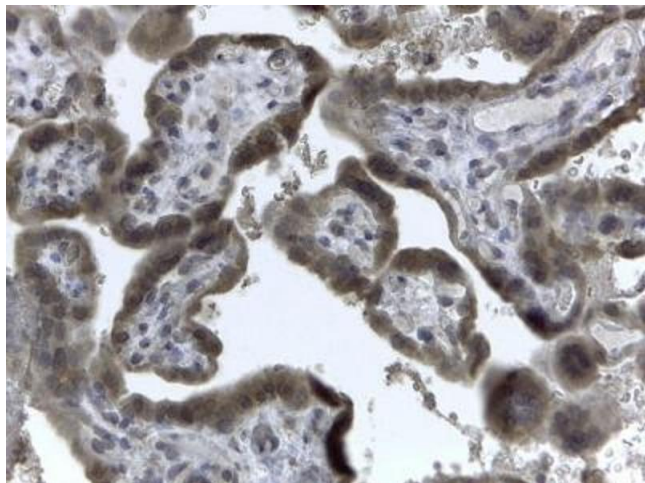
Preservative: Sodium azide

Precaution of Use: This product contains Sodium azide: a POISONOUS AND HAZARDOUS SUBSTANCE which should be handled by trained staff only.

Handling Advice: Minimize freezing and thawing.

Storage: -20 °C

Storage Comment: Aliquot and store at -20°C, with minimal freeze/thawing. A working aliquot may be refrigerated at 4°C for a few weeks and still remain viable.



Immunohistochemistry

Image 1. ABIN184972 (2µg/ml) staining of paraffin embedded Human Placenta. Steamed antigen retrieval with citrate buffer pH 6, HRP-staining.