



[Go to Product page](#)

Datasheet for ABIN184977

## anti-CARD6 antibody (N-Term)

### 1 Image

#### Overview

Quantity:	100 µg
Target:	CARD6
Binding Specificity:	N-Term
Reactivity:	Human
Host:	Goat
Clonality:	Polyclonal
Conjugate:	This CARD6 antibody is un-conjugated
Application:	ELISA, Immunohistochemistry (IHC)

#### Product Details

Purpose:	CARD6
Immunogen:	Peptide with sequence ATESTPSEIIERER-C, from the N Terminus of the protein sequence according to NP_115976.2.
Sequence:	ATESTPSEII ERER
Isotype:	IgG
Cross-Reactivity:	Human
Purification:	Purified from goat serum by ammonium sulphate precipitation followed by antigen affinity chromatography using the immunizing peptide.
Grade:	Verified

## Target Details

---

Target:	CARD6
Alternative Name:	CARD6 ( <a href="#">CARD6 Products</a> )
Background:	CARD6, caspase recruitment domain family, member 6, caspase recruitment domain protein 6, CINCIN1, CARD-containing inhibitor of Nod1 and Cardiac-induced NF-kB activation
Gene ID:	84674
NCBI Accession:	<a href="#">NP_115976</a>

## Application Details

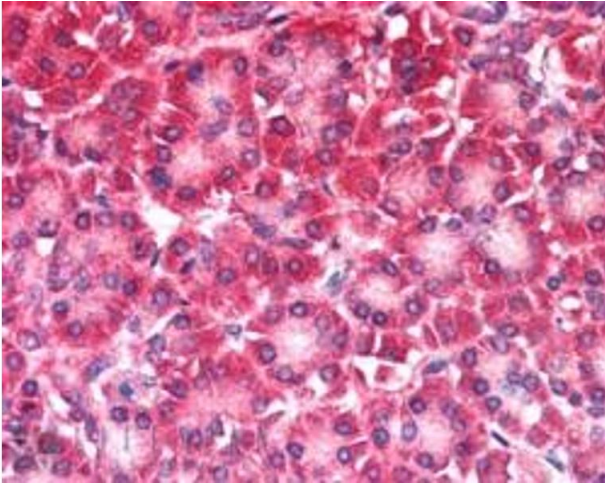
---

Application Notes:	<p>Immunohistochemistry: In paraffin embedded Human Pancreas shows variable staining of cytoplasm in acinar cells. Recommended concentration, 5-10 µg/mL.</p> <p>Western Blot: Approx. 45-50 kDa and 25-30 kDa bands observed in A549, Human Heart and Human Skeletal Muscle lysates at 1 µg of primary. Please note that the bands we observe are different from the predicted size of approx. 119 kDa according to NP_115976. Cur</p> <p>Peptide ELISA: antibody detection limit dilution 1:32000.</p>
Restrictions:	For Research Use only

## Handling

---

Format:	Liquid
Concentration:	0.5 mg/mL
Buffer:	Supplied at 0.5 mg/mL in Tris saline, 0.02 % sodium azide, pH 7.3 with 0.5 % bovine serum albumin.
Preservative:	Sodium azide
Precaution of Use:	This product contains Sodium azide: a POISONOUS AND HAZARDOUS SUBSTANCE which should be handled by trained staff only.
Handling Advice:	Minimize freezing and thawing.
Storage:	-20 °C
Storage Comment:	Aliquot and store at -20°C, with minimal freeze/thawing. A working aliquot may be refrigerated at 4°C for a few weeks and still remain viable.



### Immunohistochemistry

**Image 1.** ABIN184977 (5µg/ml) staining of paraffin embedded Human Pancreas. Steamed antigen retrieval with citrate buffer pH 6, AP-staining.