



[Go to Product page](#)

Datasheet for ABIN184985

## anti-STXBP6 antibody (N-Term)

### 1 Image

#### Overview

Quantity:	100 µg
Target:	STXBP6
Binding Specificity:	N-Term
Reactivity:	Human
Host:	Goat
Clonality:	Polyclonal
Conjugate:	This STXBP6 antibody is un-conjugated
Application:	ELISA, Immunohistochemistry (IHC)

#### Product Details

Purpose:	Amisyn / STXBP6
Immunogen:	Peptide with sequence SAKSAISKEIFAP-C, from the N Terminus of the protein sequence according to NP_054897.4
Sequence:	SAKSAISKEI FAP
Isotype:	IgG
Cross-Reactivity:	Cow, Dog, Human, Mouse, Rat
Purification:	Purified from goat serum by ammonium sulphate precipitation followed by antigen affinity chromatography using the immunizing peptide.
Grade:	Verified

## Target Details

---

Target:	STXBP6
Alternative Name:	STXBP6 ( <a href="#">STXBP6 Products</a> )
Background:	STXBP6, syntaxin binding protein 6 (amisyn), amisyn, HSPC156, amisyn, syntaxin binding protein 6, FLJ39638, OTTHUMP00000178754
Gene ID:	29091, 217517
NCBI Accession:	<a href="#">NP_054897</a>

## Application Details

---

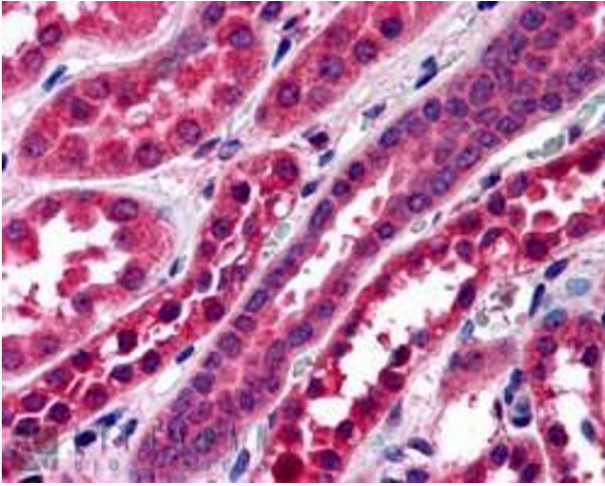
Application Notes:	<p>Immunohistochemistry: In paraffin embedded Human Kidney shows cytoplasm staining of PCT and DCT cells Recommended concentration, 3-5 µg/mL.</p> <p>Western Blot: Preliminary experiments gave bands at both approx 25 kDa and approx 45 kDa in Human Brain extracts at 0.1 µg/mL. Please note that currently we cannot find an explanation in the literature for the 45 kDa band we observe given the predicted size</p> <p>Peptide ELISA: antibody detection limit dilution 1:32000.</p>
--------------------	--

Restrictions:	For Research Use only
---------------	-----------------------

## Handling

---

Format:	Liquid
Concentration:	0.5 mg/mL
Buffer:	Supplied at 0.5 mg/mL in Tris saline, 0.02 % sodium azide, pH 7.3 with 0.5 % bovine serum albumin.
Preservative:	Sodium azide
Precaution of Use:	This product contains Sodium azide: a POISONOUS AND HAZARDOUS SUBSTANCE which should be handled by trained staff only.
Handling Advice:	Minimize freezing and thawing.
Storage:	-20 °C
Storage Comment:	Aliquot and store at -20°C, with minimal freeze/thawing. A working aliquot may be refrigerated at 4°C for a few weeks and still remain viable.



### Immunohistochemistry

**Image 1.** ABIN184985 (3.8µg/ml) staining of paraffin embedded Human Kidney. Steamed antigen retrieval with citrate buffer pH 6, AP-staining.