



[Go to Product page](#)

Datasheet for ABIN1849948
anti-RHOBTB2 antibody (N-Term)

2 Images

Overview

Quantity:	100 µL
Target:	RHOBTB2
Binding Specificity:	N-Term
Reactivity:	Human, Mouse
Host:	Rabbit
Clonality:	Polyclonal
Conjugate:	This RHOBTB2 antibody is un-conjugated
Application:	ELISA, Western Blotting (WB)

Product Details

Immunogen:	The antiserum was produced against synthesized peptide derived from N-terminal of human RHBT2.
Specificity:	Rabbit polyclonal antibody against RHBT2 protein.
Purification:	The antibody was affinity-purified from rabbit antiserum by affinity-chromatography using epitope-specific immunogen

Target Details

Target:	RHOBTB2
Abstract:	RHOBTB2 Products
UniProt:	Q9BYZ6, O94844

Application Details

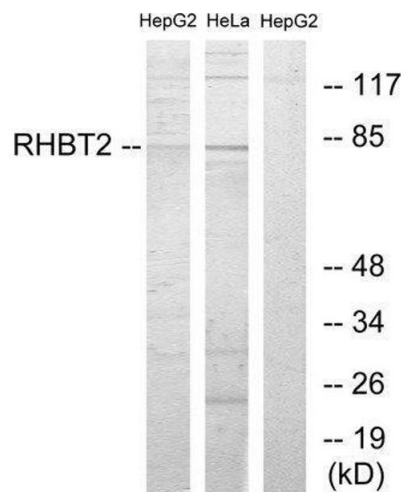
Restrictions: For Research Use only

Handling

Storage: -20 °C

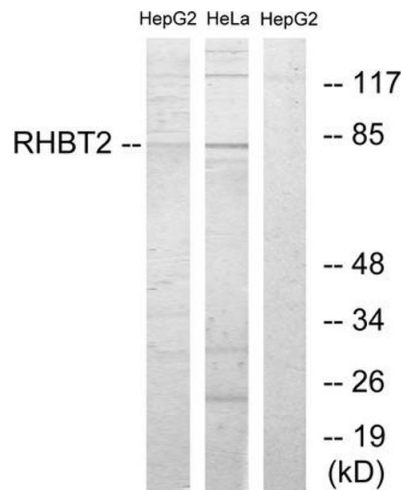
Storage Comment: Aliquot and store at -20 °C. Avoid repeated freeze/thaw cycles.

Images



Western Blotting

Image 1.



Western Blotting

Image 2. Western blot analysis of extracts from HepG2 cells and HeLa cells, using RHBT2 antibody.