

Datasheet for ABIN184998
anti-RNF141 antibody (C-Term)[Go to Product page](#)

1 Image

Overview

| | |
|----------------------|---------------------------------------|
| Quantity: | 100 µg |
| Target: | RNF141 |
| Binding Specificity: | C-Term |
| Reactivity: | Human |
| Host: | Goat |
| Clonality: | Polyclonal |
| Conjugate: | This RNF141 antibody is un-conjugated |
| Application: | ELISA, Western Blotting (WB) |

Product Details

| | |
|-------------------|---|
| Purpose: | ZNF230 / RNF141 |
| Immunogen: | Peptide with sequence C-LNMADEAGQPHRP, from the C Terminus of the protein sequence according to NP_057506.2. |
| Sequence: | LNMADEAGQP HRP |
| Isotype: | IgG |
| Cross-Reactivity: | Cow, Dog, Human, Mouse, Rat |
| Purification: | Purified from goat serum by ammonium sulphate precipitation followed by antigen affinity chromatography using the immunizing peptide. |
| Grade: | Verified |

Target Details

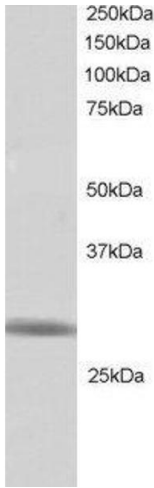
| | |
|-------------------|---|
| Target: | RNF141 |
| Alternative Name: | RNF141 (RNF141 Products) |
| Background: | RNF141, ZNF230, ZFP26, ring finger protein 141, C3HC4-like zinc finger protein, MGC8715 |
| Gene ID: | 50862, 67150 |
| NCBI Accession: | NP_057506 |

Application Details

| | |
|--------------------|---|
| Application Notes: | Western Blot: Approx 25-30 kDa band observed in Human Testis lysate (predicted MW of 26 kDa according to NP_057506). Recommended for use at 1 µg/mL. Peptide ELISA: antibody detection limit dilution 1:16000. |
| Restrictions: | For Research Use only |

Handling

| | |
|--------------------|--|
| Format: | Liquid |
| Concentration: | 0.5 mg/mL |
| Buffer: | Supplied at 0.5 mg/mL in Tris saline, 0.02 % sodium azide, pH 7.3 with 0.5 % bovine serum albumin. |
| Preservative: | Sodium azide |
| Precaution of Use: | This product contains Sodium azide: a POISONOUS AND HAZARDOUS SUBSTANCE which should be handled by trained staff only. |
| Handling Advice: | Minimize freezing and thawing. |
| Storage: | -20 °C |
| Storage Comment: | Aliquot and store at -20°C, with minimal freeze/thawing. A working aliquot may be refrigerated at 4°C for a few weeks and still remain viable. |



Western Blotting

Image 1. ABIN184998 staining (1 ug/ml) of Human Testis lysate (RIPA buffer, 30 ug total protein per lane). Primary incubated for 1 hour. Detected by western blot using chemiluminescence.