

Datasheet for ABIN184999
anti-PCGF2 antibody (C-Term)

2 Images

[Go to Product page](#)

Overview

Quantity:	100 µg
Target:	PCGF2
Binding Specificity:	C-Term
Reactivity:	Human
Host:	Goat
Clonality:	Polyclonal
Conjugate:	This PCGF2 antibody is un-conjugated
Application:	ELISA, Western Blotting (WB)

Product Details

Purpose:	MEL18 / PCGF2
Immunogen:	Peptide with sequence C-KMTVNGAPVPPLT, from the C Terminus of the protein sequence according to NP_009075.1.
Sequence:	KMTVNGAPVP PLT
Isotype:	IgG
Cross-Reactivity:	Cow, Dog, Human
Purification:	Purified from goat serum by ammonium sulphate precipitation followed by antigen affinity chromatography using the immunizing peptide.
Grade:	Verified

Target Details

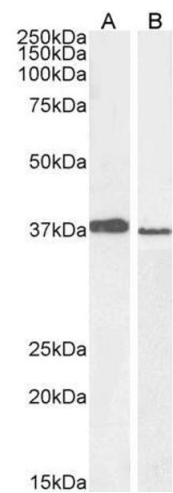
Target:	PCGF2
Alternative Name:	PCGF2 (PCGF2 Products)
Background:	PCGF2, MEL-18, polycomb group ring finger 2, RNF110, ZNF144, ring finger protein 110, zinc finger protein 144, MGC10545
Gene ID:	7703
NCBI Accession:	NP_009075
Pathways:	Chromatin Binding

Application Details

Application Notes:	Western Blot: Approx 37-38 kDa band observed in lysates of cell lines A549 and PD19 (calculated MW of 37.8 kDa according to NP_009075.1). Recommended concentration: 0.3-1 µg/mL. Primary incubation 1 hour at room temperature. Peptide ELISA: antibody detection limit dilution 1:16000.
Restrictions:	For Research Use only

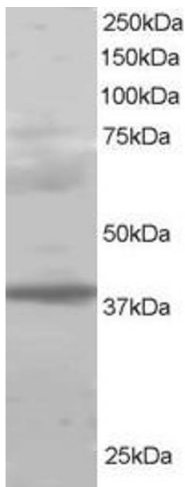
Handling

Format:	Liquid
Concentration:	0.5 mg/mL
Buffer:	Supplied at 0.5 mg/mL in Tris saline, 0.02 % sodium azide, pH 7.3 with 0.5 % bovine serum albumin.
Preservative:	Sodium azide
Precaution of Use:	This product contains Sodium azide: a POISONOUS AND HAZARDOUS SUBSTANCE which should be handled by trained staff only.
Handling Advice:	Minimize freezing and thawing.
Storage:	-20 °C
Storage Comment:	Aliquot and store at -20°C, with minimal freeze/thawing. A working aliquot may be refrigerated at 4°C for a few weeks and still remain viable.



Western Blotting

Image 1. ABIN184999 staining (1µg/ml) of A549 (A) and PD19 (B) cell lysate (RIPA buffer, 30µg total protein per lane). Detected by chemiluminescence.



Western Blotting

Image 2. ABIN184999 staining (1µg/ml) of Human Lung lysate (RIPA buffer, 30µg total protein per lane). Primary incubated for 1 hour. Detected by western blot using chemiluminescence.