

Datasheet for ABIN185012
anti-REV1 antibody (C-Term)[Go to Product page](#)

1 Image

Overview

Quantity:	100 µg
Target:	REV1
Binding Specificity:	C-Term
Reactivity:	Human
Host:	Goat
Clonality:	Polyclonal
Conjugate:	This REV1 antibody is un-conjugated
Application:	Immunohistochemistry (IHC), ELISA

Product Details

Purpose:	REV1L
Immunogen:	Peptide with sequence C-VLQQTYGSTLKVT, from the C Terminus of the protein sequence according to NP_057400.1, NP_001032961.1.
Sequence:	VLQQTYGSTL KVT
Isotype:	IgG
Specificity:	This antibody is expected to recognise both reported isoforms.
Cross-Reactivity:	Cow, Dog, Human, Mouse, Rat
Purification:	Purified from goat serum by ammonium sulphate precipitation followed by antigen affinity chromatography using the immunizing peptide.
Grade:	Verified

Target Details

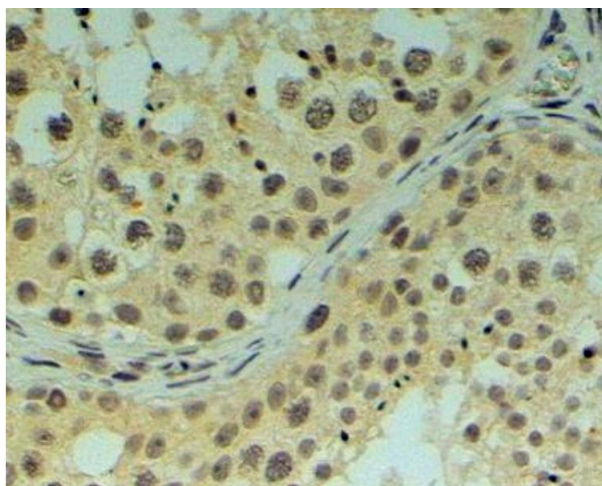
Target:	REV1
Alternative Name:	REV1 (REV1 Products)
Background:	REV1, REV1L, REV1-like (yeast), REV1, REV1 protein, REV1 (yeast homolog)- like, REV1 homolog (S. cerevisiae), FLJ21523, MGC163283, MGC26225, REV1- like
Gene ID:	51455, 56210
NCBI Accession:	NP_057400 , NP_001032961
Pathways:	DNA Damage Repair , Regulation of Actin Filament Polymerization , Production of Molecular Mediator of Immune Response

Application Details

Application Notes:	<p>Immunohistochemistry: In paraffin embedded Human Testis shows nuclear staining in spermatogonia and spermatocytes. Recommended concentration, 4-6 µg/mL.</p> <p>Western Blot: No signal obtained yet but low background observed in MOLT-4 lysates at up to 1.5 µg/mL. We would appreciate any feedback from people in the field - have any results been reported with other antibodies/lysates?</p> <p>Peptide ELISA: antibody detection limit dilution 1:8000.</p>
Restrictions:	For Research Use only

Handling

Format:	Liquid
Concentration:	0.5 mg/mL
Buffer:	Supplied at 0.5 mg/mL in Tris saline, 0.02 % sodium azide, pH 7.3 with 0.5 % bovine serum albumin.
Preservative:	Sodium azide
Precaution of Use:	This product contains Sodium azide: a POISONOUS AND HAZARDOUS SUBSTANCE which should be handled by trained staff only.
Handling Advice:	Minimize freezing and thawing.
Storage:	-20 °C
Storage Comment:	Aliquot and store at -20°C, with minimal freeze/thawing. A working aliquot may be refrigerated at 4°C for a few weeks and still remain viable.



Immunohistochemistry

Image 1. ABIN185012 (4µg/ml) staining of paraffin embedded Human Testis. Steamed antigen retrieval with Tris/EDTA buffer pH 9, HRP-staining.