



[Go to Product page](#)

Datasheet for ABIN185029

anti-FOXC2 antibody (C-Term)

6 Images

Overview

Quantity:	100 µg
Target:	FOXC2
Binding Specificity:	C-Term
Reactivity:	Human
Host:	Goat
Clonality:	Polyclonal
Conjugate:	This FOXC2 antibody is un-conjugated
Application:	Western Blotting (WB), ELISA, Flow Cytometry (FACS)

Product Details

Purpose:	FOXC2
Immunogen:	Peptide with sequence RHAAPYSYDCTKY, from the C Terminus of the protein sequence according to NP_005242.1.
Sequence:	RHAAPYSYDC TKY
Isotype:	IgG
Cross-Reactivity:	Cow, Dog, Human, Rat
Purification:	Purified from goat serum by ammonium sulphate precipitation followed by antigen affinity chromatography using the immunizing peptide.
Grade:	Verified

Target Details

Target:	FOXC2
Alternative Name:	FOXC2 (FOXC2 Products)
Background:	FOXC2, forkhead box C2 (MFH-1, mesenchyme forkhead 1), MFH1, MFH-1, FKHL14, MFH-1,mesenchyme forkhead 1, forkhead (Drosophila)-like 14, forkhead, Drosophila, homolog-like 14, forkhead (Drosophila)-like 14 (MFH-1, mesenchyme forkhead 1), LD, forkhead box C
Gene ID:	2303, 14234
NCBI Accession:	NP_005242

Application Details

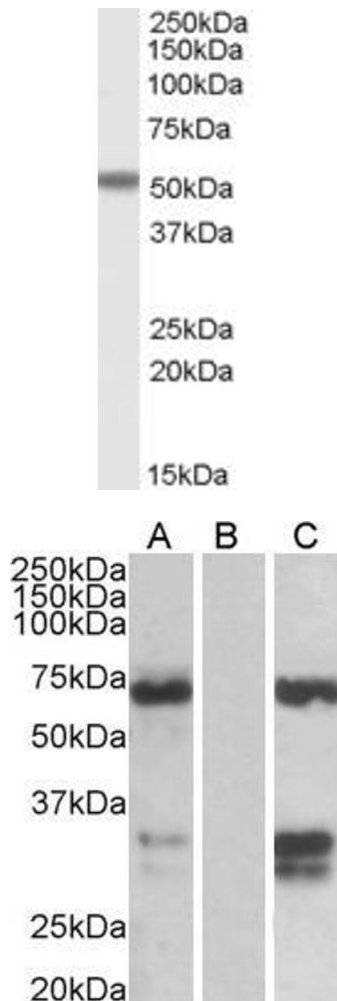
Application Notes: Western Blot: Approx 60-70 kDa band observed in nuclear lysates of cell lines HEK293 (calculated MW of 53.7 kDa according to NP_005242.1). This molecular weight is routinely observed by other sources e.g. Berry, FB et al, PMID: 16081467. Recommended concen
Peptide ELISA: antibody detection limit dilution 1:4000.

Comment: **Flow Cytometry:** Flow cytometric analysis of HEK293 cells. Recommended concentration: 10ug/ml.

Restrictions: For Research Use only

Handling

Format:	Liquid
Concentration:	0.5 mg/mL
Buffer:	Supplied at 0.5 mg/mL in Tris saline, 0.02 % sodium azide, pH 7.3 with 0.5 % bovine serum albumin.
Preservative:	Sodium azide
Precaution of Use:	This product contains Sodium azide: a POISONOUS AND HAZARDOUS SUBSTANCE which should be handled by trained staff only.
Handling Advice:	Minimize freezing and thawing.
Storage:	-20 °C
Storage Comment:	Aliquot and store at -20°C, with minimal freeze/thawing. A working aliquot may be refrigerated at 4°C for a few weeks and still remain viable.

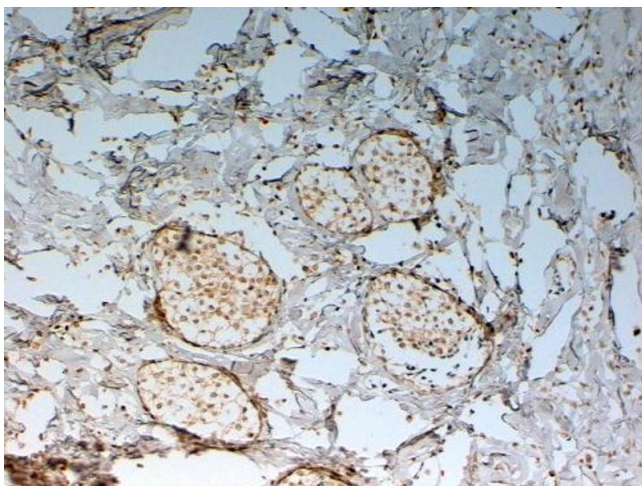


Western Blotting

Image 1. ABIN185029 staining (1 μ g/ml) of Human Breast Cancer lysate (RIPA buffer, 30 μ g total protein per lane). Primary incubated for 1 hour. Detected by western blot using chemiluminescence.

Western Blotting

Image 2. HEK293 lysate (10 μ g protein in RIPA buffer) over expressing Human FOXC2 with DYKDDDDK tag probed with ABIN185029 (0.1 μ g/mL) in Lane A and probed with anti-DYKDDDDK Tag (1/1000) in lane C. Mock-transfected HEK293 probed with ABIN185029 (1mg/ml) in Lane B. Primary incubations were for 1 hour. Detected by chemiluminescence.



Immunohistochemistry

Image 3. ABIN185029 (2 μ g/mL) staining of paraffin embedded Human Breast cancer. Steamed antigen retrieval with citrate buffer pH 6, HRP-staining.

Please check the [product details page](#) for more images. Overall 6 images are available for ABIN185029.