

Datasheet for ABIN185030
anti-FOXD1 antibody (C-Term)[Go to Product page](#)

3 Images

Overview

Quantity:	100 µg
Target:	FOXD1
Binding Specificity:	C-Term
Reactivity:	Human
Host:	Goat
Clonality:	Polyclonal
Conjugate:	This FOXD1 antibody is un-conjugated
Application:	ELISA, Immunohistochemistry (IHC)

Product Details

Purpose:	FOXD1 / FREAC4 / FKHL8
Immunogen:	Peptide with sequence SSVENFTARISNC, from the C Terminus of the protein sequence according to NP_004463.1.
Sequence:	SSVENFTARI SNC
Isotype:	IgG
Cross-Reactivity:	Human, Mouse, Rat
Purification:	Purified from goat serum by ammonium sulphate precipitation followed by antigen affinity chromatography using the immunizing peptide.
Grade:	Verified

Target Details

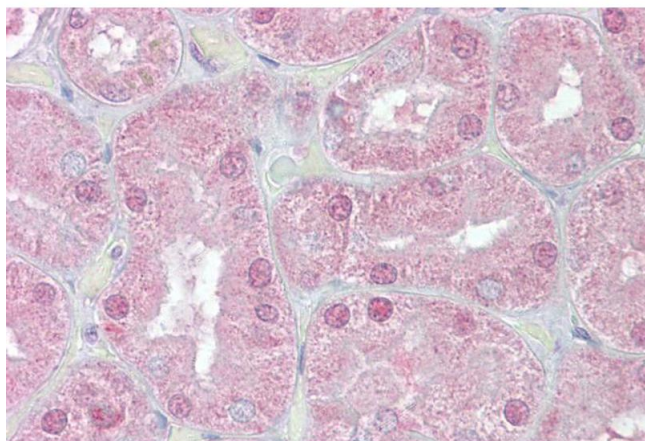
Target:	FOXD1
Alternative Name:	FOXD1 (FOXD1 Products)
Background:	FOXD1, forkhead box D1, FKHL8, FREAC4, forkhead (Drosophila)-like 8, forkhead-related activator 4, Forkhead, drosophila, homolog-like 8, forkhead-like 8
Gene ID:	2297, 15229
NCBI Accession:	NP_004463

Application Details

Application Notes:	Immunohistochemistry: Paraffin embedded Human Kidney. Recommended concentration: 3.75 µg/mL. Peptide ELISA: antibody detection limit dilution 1:128000.
Restrictions:	For Research Use only

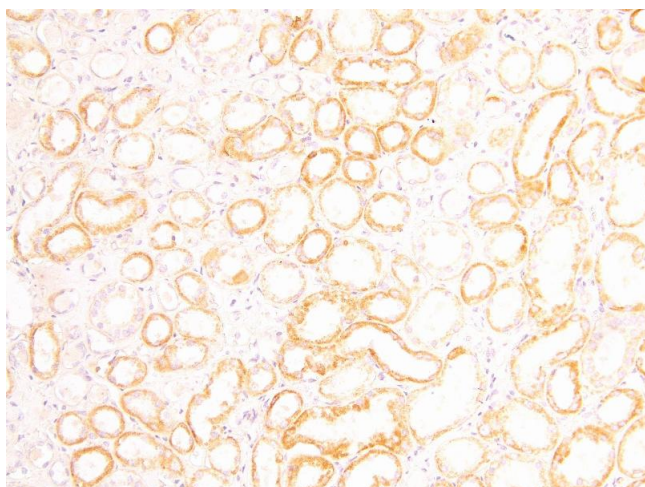
Handling

Format:	Liquid
Concentration:	0.5 mg/mL
Buffer:	Supplied at 0.5 mg/mL in Tris saline, 0.02 % sodium azide, pH 7.3 with 0.5 % bovine serum albumin.
Preservative:	Sodium azide
Precaution of Use:	This product contains Sodium azide: a POISONOUS AND HAZARDOUS SUBSTANCE which should be handled by trained staff only.
Handling Advice:	Minimize freezing and thawing.
Storage:	-20 °C
Storage Comment:	Aliquot and store at -20°C, with minimal freeze/thawing. A working aliquot may be refrigerated at 4°C for a few weeks and still remain viable.



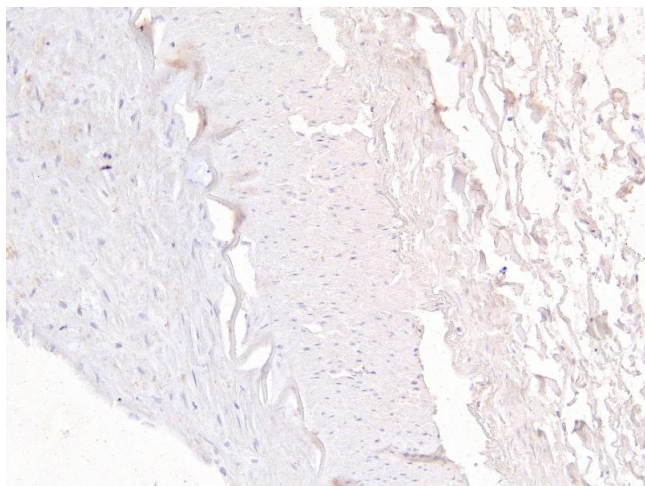
Immunohistochemistry

Image 1. ABIN185030 (2.5µg/ml) staining of paraffin embedded Human Kidney. Steamed antigen retrieval with citrate buffer pH 6, AP-staining.



Immunohistochemistry

Image 2. ABIN185030 (3.75µg/ml) staining of paraffin embedded Human Kidney. Heat induced antigen retrieval with citrate buffer pH 6, HRP-staining.



Immunohistochemistry

Image 3. ABIN185030 Negative Control showing staining of paraffin embedded Human Kidney, with no primary antibody.