



[Go to Product page](#)

Datasheet for ABIN185032  
**anti-FOXE1 antibody (C-Term)**

2 Images

Overview

Quantity:	100 µg
Target:	FOXE1
Binding Specificity:	C-Term
Reactivity:	Human
Host:	Goat
Clonality:	Polyclonal
Conjugate:	This FOXE1 antibody is un-conjugated
Application:	ELISA, Immunohistochemistry (IHC)

Product Details

Purpose:	FOXE1 / TTF2
Immunogen:	Peptide with sequence C-AYPGGIDRFVSAM, from the C Terminus of the protein sequence according to NP_004464.2.
Sequence:	AYPGGIDRFV SAM
Isotype:	IgG
Cross-Reactivity:	Human
Purification:	Purified from goat serum by ammonium sulphate precipitation followed by antigen affinity chromatography using the immunizing peptide.
Grade:	Verified

## Target Details

---

Target:	FOXE1
Alternative Name:	FOXE1 ( <a href="#">FOXE1 Products</a> )
Background:	FOXE1, TTF2, forkhead box E1 (thyroid transcription factor 2), FOXE2, HFKH4, HFKL5, TITF2, TTF-2, FKHL15, forkhead (Drosophila)-like 15, forkhead box E1, forkhead box E2, thyroid transcription factor-2, Forkhead, drosophila, homolog-like 15
Gene ID:	2304
NCBI Accession:	<a href="#">NP_004464</a>

## Application Details

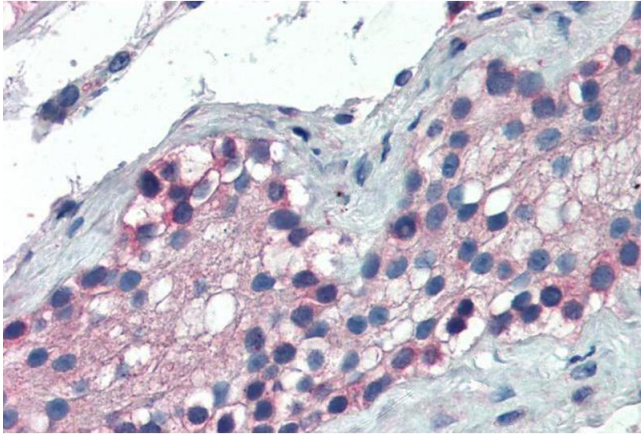
---

Application Notes:	<p>Immunohistochemistry: In paraffin embedded Human Thyroid Gland shows nuclear staining in thyrocytes. Recommended concentration: 2-4 µg/mL. Paraffin embedded Human Testis. Recommended concentration: 5 µg/mL.</p> <p>Western Blot: Preliminary experiments gave an approx 70 kDa band in Human Thymus and Thyroid Gland lysates after 0.3 µg/mL antibody staining. Please note that currently we cannot find an explanation in the literature for the band we observe given the calca</p> <p>Peptide ELISA: antibody detection limit dilution 1:8000.</p>
Restrictions:	For Research Use only

## Handling

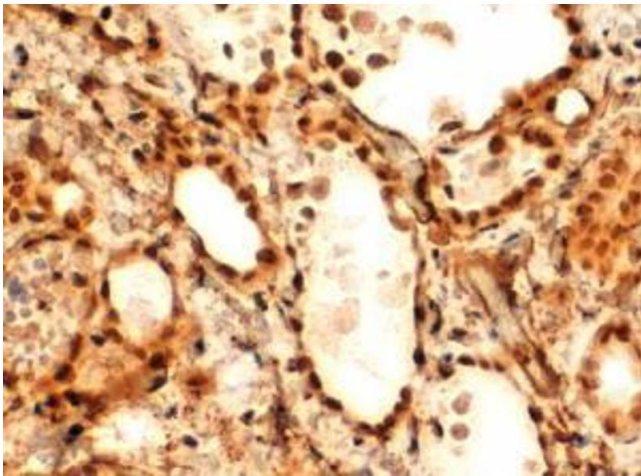
---

Format:	Liquid
Concentration:	0.5 mg/mL
Buffer:	Supplied at 0.5 mg/mL in Tris saline, 0.02 % sodium azide, pH 7.3 with 0.5 % bovine serum albumin.
Preservative:	Sodium azide
Precaution of Use:	This product contains Sodium azide: a POISONOUS AND HAZARDOUS SUBSTANCE which should be handled by trained staff only.
Handling Advice:	Minimize freezing and thawing.
Storage:	-20 °C
Storage Comment:	Aliquot and store at -20°C, with minimal freeze/thawing. A working aliquot may be refrigerated at 4°C for a few weeks and still remain viable.



#### Immunohistochemistry

**Image 1.** ABIN185032 (5µg/ml) staining of paraffin embedded Human Testis. Steamed antigen retrieval with Tris/EDTA buffer pH 9, AP-staining.



#### Immunohistochemistry

**Image 2.** Antibody (2µg/ml) staining of paraffin embedded Human Thyroid Gland. Steamed antigen retrieval with Tris/EDTA buffer pH 9, HRP-staining.