

Datasheet for ABIN185040  
**anti-FOXL2 antibody (C-Term)**



[Go to Product page](#)

12 Images 2 Publications

## Overview

Quantity:	100 µg
Target:	FOXL2
Binding Specificity:	C-Term
Reactivity:	Human, Mouse
Host:	Goat
Clonality:	Polyclonal
Conjugate:	This FOXL2 antibody is un-conjugated
Application:	Western Blotting (WB), ELISA, Immunohistochemistry (IHC)

## Product Details

Purpose:	FOXL2 / BPES
Immunogen:	Peptide with sequence C-DSKTGALHSRLDL, from the C Terminus of the protein sequence according to NP_075555.1.
Sequence:	DSKTGALHSR LDL
Isotype:	IgG
Cross-Reactivity:	Cow, Human, Mouse, Rat
Purification:	Purified from goat serum by ammonium sulphate precipitation followed by antigen affinity chromatography using the immunizing peptide.
Grade:	Verified

## Target Details

---

Target:	FOXL2
Alternative Name:	FOXL2 ( <a href="#">FOXL2 Products</a> )
Background:	FOXL2, BPES, forkhead box L2, PFRK, BPES1, PINTO, forkhead transcription factor FOXL2, blepharophimosis, epicanthus inversus and ptosis, Blepharophimosis, epicanthus inversus, and ptosis 1, POF3
Gene ID:	668, 26927
NCBI Accession:	<a href="#">NP_075555</a>
Pathways:	<a href="#">Nuclear Hormone Receptor Binding</a> , <a href="#">Positive Regulation of Endopeptidase Activity</a>

## Application Details

---

Application Notes:	Immunohistochemistry: Paraffin embedded Human Ovary. Recommended concentration: 8 $\mu$ g/mL. Western Blot: Approx. 50 kDa band observed in Mouse Ovary lysates and in preliminary testing of Human Uterus and Rat Ovary lysate (calculated MW of 38.9 kDa according to Mouse NP_036150.1). This molecular weight is routinely observed by other sources. Reco Peptide ELISA: antibody detection limit dilution 1:128000.
Restrictions:	For Research Use only

## Handling

---

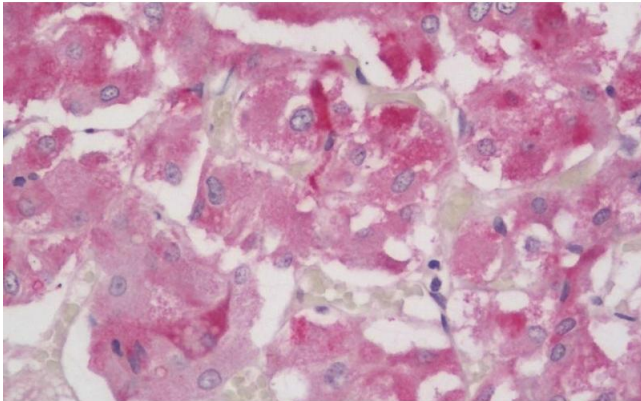
Format:	Liquid
Concentration:	0.5 mg/mL
Buffer:	Supplied at 0.5 mg/mL in Tris saline, 0.02 % sodium azide, pH 7.3 with 0.5 % bovine serum albumin.
Preservative:	Sodium azide
Precaution of Use:	This product contains Sodium azide: a POISONOUS AND HAZARDOUS SUBSTANCE which should be handled by trained staff only.
Handling Advice:	Minimize freezing and thawing.
Storage:	-20 °C
Storage Comment:	Aliquot and store at -20°C, with minimal freeze/thawing. A working aliquot may be refrigerated at 4°C for a few weeks and still remain viable.

## Publications

Product cited in: Padua, Fox, Jiang, Morse, Tevosian: "Simultaneous gene deletion of gata4 and gata6 leads to early disruption of follicular development and germ cell loss in the murine ovary." in: **Biology of reproduction**, Vol. 91, Issue 1, pp. 24, (2014) ([PubMed](#)).

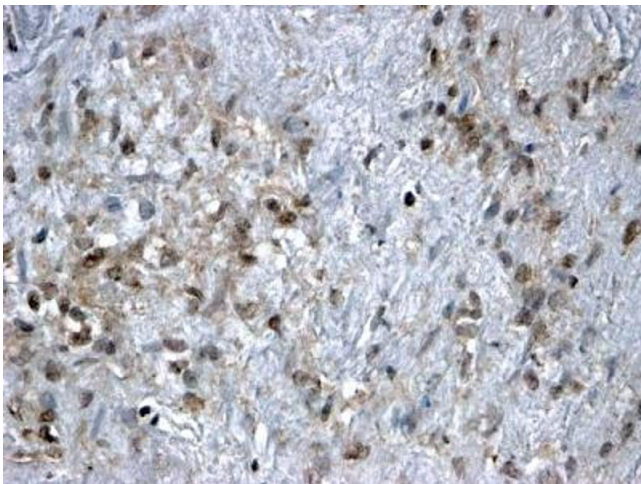
Blount, Schmidt, Justice, Vale, Fischer, Bilezikjian: "FoxL2 and Smad3 coordinately regulate follistatin gene transcription." in: **The Journal of biological chemistry**, Vol. 284, Issue 12, pp. 7631-45, (2009) ([PubMed](#)).

## Images



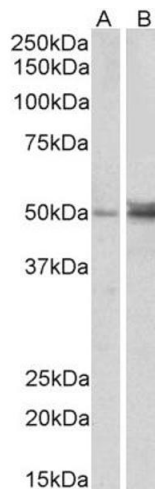
### Immunohistochemistry

**Image 1.** (ABIN185040) (5 µg/mL) staining of paraffin embedded Human Adrenal Gland. Steamed antigen retrieval with citrate buffer pH 6, AP-staining. This data is from a previous batch, not on sale.



### Immunohistochemistry

**Image 2.** ABIN185040 (2 µg/ml) staining of paraffin embedded Human Ovary. Steamed antigen retrieval with citrate buffer pH 6, HRP-staining. This data is from a previous batch, not on sale.



### Western Blotting

**Image 3.** ABIN185040 (1 $\mu$ g/ml) staining of Human (A) and Mouse (B) Ovary lysate (35 $\mu$ g protein in RIPA buffer). Primary incubation was 1 hour. Detected by chemiluminescence.

Please check the [product details page](#) for more images. Overall 12 images are available for ABIN185040.