

Datasheet for ABIN185050
anti-PPP1R8 antibody (C-Term)

3 Images

[Go to Product page](#)

Overview

Quantity:	100 µg
Target:	PPP1R8
Binding Specificity:	C-Term
Reactivity:	Human, Mouse
Host:	Goat
Clonality:	Polyclonal
Conjugate:	This PPP1R8 antibody is un-conjugated
Application:	Western Blotting (WB), ELISA, Immunohistochemistry (IHC)

Product Details

Purpose:	NIPP1 / PPP1R8
Immunogen:	Peptide with sequence C-EAWPGKKPTPSLLI, from the C Terminus of the protein sequence according to NP_002704.1, NP_054829.2, NP_612568.1.
Sequence:	EAWPGKKPTP SLLI
Isotype:	IgG
Specificity:	This antibody is expected to recognise all three human isoforms of this protein.
Cross-Reactivity:	Cow, Dog, Human, Mouse
Purification:	Purified from goat serum by ammonium sulphate precipitation followed by antigen affinity chromatography using the immunizing peptide.
Grade:	Verified

Target Details

Target:	PPP1R8
Alternative Name:	PPP1R8 (PPP1R8 Products)
Background:	PPP1R8, NIPP1, protein phosphatase 1, regulatory (inhibitor) subunit 8, ARD1, NIPP-1, PRO2047, ard-1, activator of RNA decay, nuclear subunit of PP-1, homolog of E.coli RNase E, nuclear inhibitor of protein phosphatase-1, protein phosphatase-1, regulatory
Gene ID:	5511, 100336
NCBI Accession:	NP_002704 , NP_054829 , NP_612568

Application Details

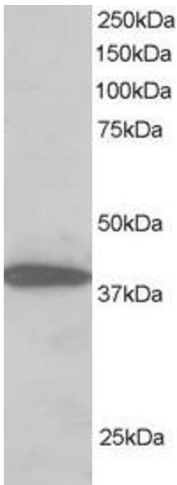
Application Notes:	<p>Immunohistochemistry: In paraffin embedded Human Thymus shows speckled staining of nuclei. Recommended concentration: 2.5-3.8 µg/mL.</p> <p>Western Blot: Approx 40 kDa band observed in nuclear lysates of cell lines HeLa, HepG2, Jurkat and NIH3T3 (calculated MW of 38.5 kDa according to Human NP_054829.2 and to Mouse NP_666266.1). Recommended concentration: 0.3-1 µg/mL. Primary incubation was 1 h</p> <p>Peptide ELISA: antibody detection limit dilution 1:32000.</p>
Comment:	Additional validation: This antibody has been successfully used in the following paper: Sikorski et al. (2018) PMID: 30377371.
Restrictions:	For Research Use only

Handling

Format:	Liquid
Concentration:	0.5 mg/mL
Buffer:	Supplied at 0.5 mg/mL in Tris saline, 0.02 % sodium azide, pH 7.3 with 0.5 % bovine serum albumin.
Preservative:	Sodium azide
Precaution of Use:	This product contains Sodium azide: a POISONOUS AND HAZARDOUS SUBSTANCE which should be handled by trained staff only.
Handling Advice:	Minimize freezing and thawing.
Storage:	-20 °C
Storage Comment:	Aliquot and store at -20°C, with minimal freeze/thawing. A working aliquot may be refrigerated

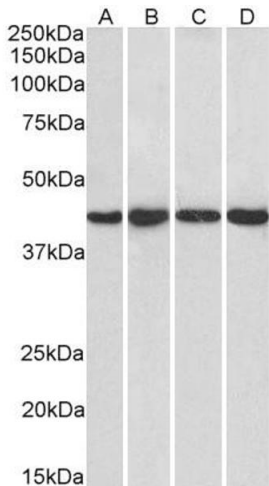
at 4°C for a few weeks and still remain viable.

Images



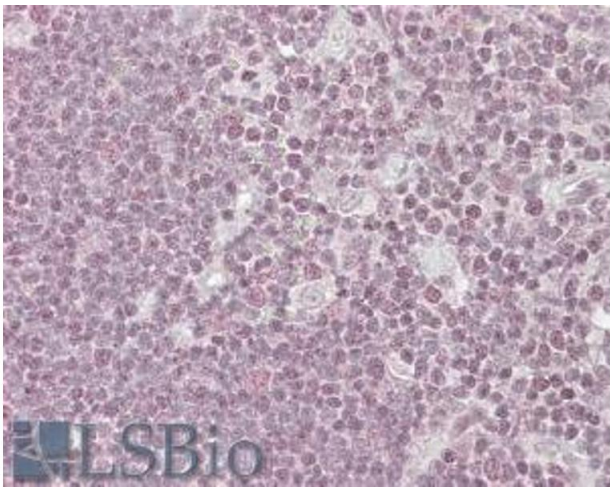
Western Blotting

Image 1. ABIN185050 staining (2µg/ml) of H460 lysate (RIPA buffer, 30µg total protein per lane). Primary incubated for 1 hour. Detected by western blot using chemiluminescence.



Western Blotting

Image 2. ABIN185050 (1µg/ml) staining of HeLa (A), HepG2 (B), Jurkat (C) and NIH3T3 (D) nuclear lysate (35µg protein in RIPA buffer). Detected by chemiluminescence.



Immunohistochemistry

Image 3. ABIN185050 (3.8µg/ml) staining of paraffin embedded Human Thymus. Steamed antigen retrieval with citrate buffer pH 6, AP-staining.