

Datasheet for ABIN185062  
**anti-SMARCE1 antibody (C-Term)**[Go to Product page](#)

## 1 Image

## Overview

Quantity:	100 µg
Target:	SMARCE1
Binding Specificity:	C-Term
Reactivity:	Human
Host:	Goat
Clonality:	Polyclonal
Conjugate:	This SMARCE1 antibody is un-conjugated
Application:	Western Blotting (WB), Immunohistochemistry (IHC), ELISA

## Product Details

Purpose:	BAF57 / SMARCE1
Immunogen:	Peptide with sequence C-PPTDPIPEDEKKE, from the C Terminus of the protein sequence according to NP_003070.3.
Sequence:	PPTDPIPEDE KKE
Isotype:	IgG
Cross-Reactivity:	Human, Mouse
Purification:	Purified from goat serum by ammonium sulphate precipitation followed by antigen affinity chromatography using the immunizing peptide.
Grade:	Verified

## Target Details

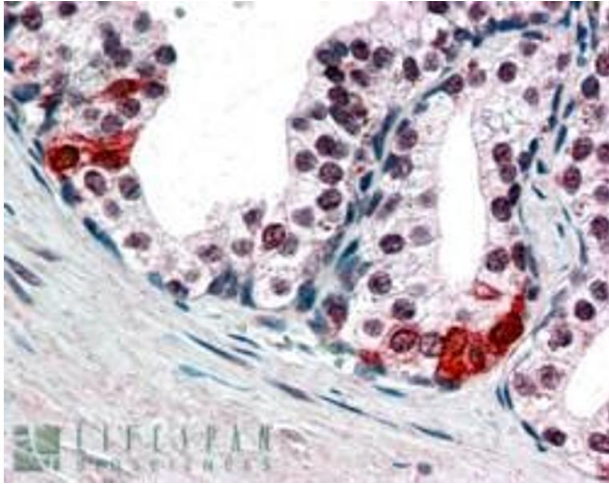
Target:	SMARCE1
Alternative Name:	SMARCE1 ( <a href="#">SMARCE1 Products</a> )
Background:	SMARCE1, BAF57, SWI/SNF related, matrix associated, actin dependent regulator of chromatin, subfamily e, member 1, mammalian chromatin remodeling complex BRG1-associated factor 57, BAF57, SWI/SNF-related matrix-associated actin-dependent regulator of chro
Gene ID:	6605, 57376
NCBI Accession:	<a href="#">NP_003070</a>
Pathways:	<a href="#">Chromatin Binding</a>

## Application Details

Application Notes:	<p>Immunohistochemistry: In paraffin embedded Human Prostate shows nuclear staining in secretory epithelial cells. Recommended concentration, 3-5 µg/mL.</p> <p>Western Blot: Approx 50 kDa band observed in lysates of cell lines HEPG2, HeLa and Jurkat (calculated MW of 46.6 kDa according to NP_003070.3). A 48 kDa band was observed in transfected HEK293 transiently expressing BAF57. This band is not observed in the</p> <p>Peptide ELISA: antibody detection limit dilution 1:16000.</p>
Restrictions:	For Research Use only

## Handling

Format:	Liquid
Concentration:	0.5 mg/mL
Buffer:	Supplied at 0.5 mg/mL in Tris saline, 0.02 % sodium azide, pH 7.3 with 0.5 % bovine serum albumin.
Preservative:	Sodium azide
Precaution of Use:	This product contains Sodium azide: a POISONOUS AND HAZARDOUS SUBSTANCE which should be handled by trained staff only.
Handling Advice:	Minimize freezing and thawing.
Storage:	-20 °C
Storage Comment:	Aliquot and store at -20°C, with minimal freeze/thawing. A working aliquot may be refrigerated at 4°C for a few weeks and still remain viable.



#### Immunohistochemistry

**Image 1.** In paraffin embedded Human Prostate shows nuclear staining in secretory epithelial cells. Recommended concentration, 3-5µg/ml.