



[Go to Product page](#)

Datasheet for ABIN1850620
anti-RPL26L antibody (C-Term)

2 Images

Overview

Quantity:	100 µL
Target:	RPL26L
Binding Specificity:	C-Term
Reactivity:	Human, Mouse, Rat
Host:	Rabbit
Clonality:	Polyclonal
Conjugate:	This RPL26L antibody is un-conjugated
Application:	Western Blotting (WB), ELISA

Product Details

Immunogen:	The antiserum was produced against synthesized peptide derived from C-terminal of human RPL26L.
Specificity:	Rabbit polyclonal antibody against RPL26L protein.
Purification:	The antibody was affinity-purified from rabbit antiserum by affinity-chromatography using epitope-specific immunogen

Target Details

Target:	RPL26L
Alternative Name:	RPL26L (RPL26L Products)
UniProt:	Q9UNX3

Application Details

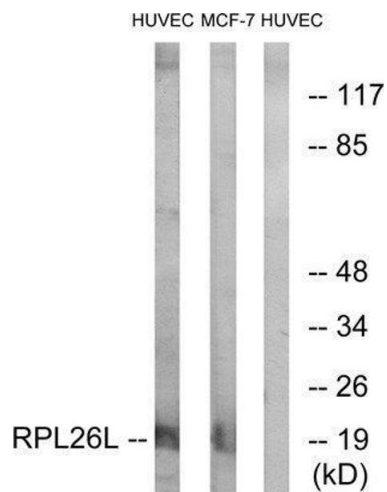
Restrictions: For Research Use only

Handling

Storage: -20 °C

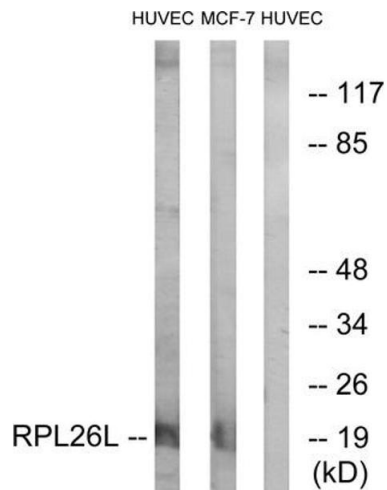
Storage Comment: Aliquot and store at -20 °C. Avoid repeated freeze/thaw cycles.

Images



Western Blotting

Image 1.



Western Blotting

Image 2. Western blot analysis of extracts from HUVEC cells and MCF-7 cells, using RPL26L antibody.