

Datasheet for ABIN185067
anti-FBXW2 antibody (C-Term)

2 Images

[Go to Product page](#)

Overview

Quantity:	100 µg
Target:	FBXW2
Binding Specificity:	C-Term
Reactivity:	Human, Mouse, Rat
Host:	Goat
Clonality:	Polyclonal
Conjugate:	This FBXW2 antibody is un-conjugated
Application:	ELISA, Western Blotting (WB), Immunohistochemistry (IHC)

Product Details

Purpose:	FBXW2
Immunogen:	Peptide with sequence C-KRGSSFLAGEHPG, from the C Terminus of the protein sequence according to NP_036296.2.
Sequence:	KRGSSFLAGE HPG
Isotype:	IgG
Cross-Reactivity:	Cow, Dog, Human, Mouse, Pig, Rat
Purification:	Purified from goat serum by ammonium sulphate precipitation followed by antigen affinity chromatography using the immunizing peptide.
Grade:	Verified

Target Details

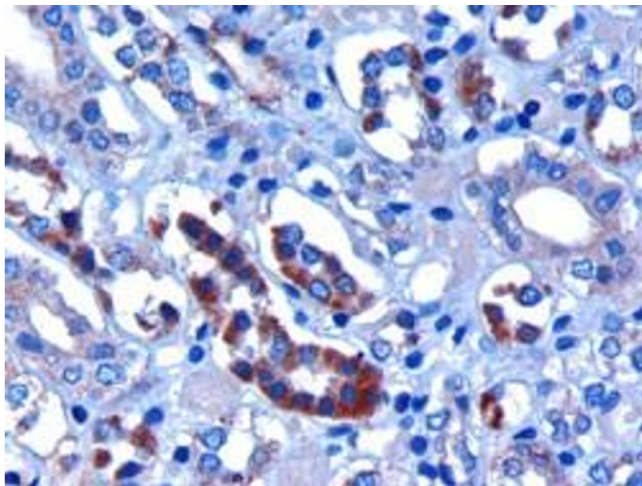
Target:	FBXW2
Alternative Name:	FBXW2 (FBXW2 Products)
Background:	FBXW2, F-box and WD-40 domain protein 2, FBW2, Fwd2, MGC117371, Md6, F-box protein Fbw2, F-box and WD repeat domain containing 2
Gene ID:	26190
NCBI Accession:	NP_036296

Application Details

Application Notes:	<p>Immunohistochemistry: In paraffin embedded Human Kidney, shows cytoplasmic staining of epithelial cells in some renal tubules. Recommended concentration, 2-3 µg/mL. An anonymous customer found positive results in IHC on Mouse kidney tissue. An anonymous c</p> <p>Western Blot: Approx 48 kDa band observed in Human Kidney lysates (calculated MW of 48.0 kDa according to NP_036296.1). Recommended concentration: 0.3-1.5 µg/mL. A stronger band of unknown identity was also consistently observed at appr. 30 kDa - both band</p> <p>Peptide ELISA: antibody detection limit dilution 1:128000.</p>
Restrictions:	For Research Use only

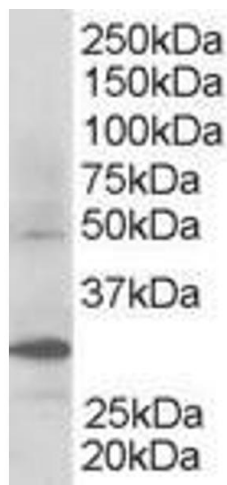
Handling

Format:	Liquid
Concentration:	0.5 mg/mL
Buffer:	Supplied at 0.5 mg/mL in Tris saline, 0.02 % sodium azide, pH 7.3 with 0.5 % bovine serum albumin.
Preservative:	Sodium azide
Precaution of Use:	This product contains Sodium azide: a POISONOUS AND HAZARDOUS SUBSTANCE which should be handled by trained staff only.
Handling Advice:	Minimize freezing and thawing.
Storage:	-20 °C
Storage Comment:	Aliquot and store at -20°C, with minimal freeze/thawing. A working aliquot may be refrigerated at 4°C for a few weeks and still remain viable.



Immunohistochemistry

Image 1. ABIN185067 (3µg/ml) staining of paraffin embedded Human Kidney. Microwaved antigen retrieval with citrate buffer pH 6, HRP-staining.



Western Blotting

Image 2. ABIN185067 staining (0.3µg/ml) of Human Kidney lysate (RIPA buffer, 30µg total protein per lane). Primary incubated for 1 hour. Detected by western blot using chemiluminescence.