

Datasheet for ABIN185068  
**anti-TCF19 antibody (C-Term)**[Go to Product page](#)

## 1 Image

## Overview

Quantity:	100 µg
Target:	TCF19
Binding Specificity:	C-Term
Reactivity:	Human
Host:	Goat
Clonality:	Polyclonal
Conjugate:	This TCF19 antibody is un-conjugated
Application:	Western Blotting (WB), ELISA

## Product Details

Purpose:	TCF19 / SC1
Immunogen:	Peptide with sequence C-RSTAKAPSDTPAHE, from the C Terminus of the protein sequence according to NP_009040.1.
Sequence:	RSTAKAPSDT PAHE
Isotype:	IgG
Specificity:	Immunizing peptide was designed based on NP_009040.1, but this version has become NP_009040.2 and shorter, thus no longer matching with the peptide.
Cross-Reactivity:	Human
Purification:	Purified from goat serum by ammonium sulphate precipitation followed by antigen affinity chromatography using the immunizing peptide.

## Product Details

Grade: Verified

## Target Details

Target: TCF19

Alternative Name: TCF19 ([TCF19 Products](#))

Background: TCF19, SC1, transcription factor 19 (SC1), transcription factor 19, DAMA-213L4.5, SC1-1, SC1(TCF19)-6, SC1(TCF19)-7, SCI(TCF19)-4

Gene ID: 6941

NCBI Accession: [NP\\_009040](#)

## Application Details

Application Notes: Western Blot: Approx 35 kDa band observed in 293 lysate (predicted MW of 41 kDa according to NP\_009040). Recommended for use at 1-2 µg/mL.  
Peptide ELISA: antibody detection limit dilution 1:32000.

Restrictions: For Research Use only

## Handling

Format: Liquid

Concentration: 0.5 mg/mL

Buffer: Supplied at 0.5 mg/mL in Tris saline, 0.02 % sodium azide, pH 7.3 with 0.5 % bovine serum albumin.

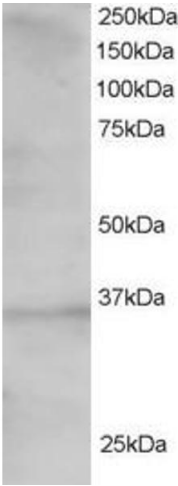
Preservative: Sodium azide

Precaution of Use: This product contains Sodium azide: a POISONOUS AND HAZARDOUS SUBSTANCE which should be handled by trained staff only.

Handling Advice: Minimize freezing and thawing.

Storage: -20 °C

Storage Comment: Aliquot and store at -20°C, with minimal freeze/thawing. A working aliquot may be refrigerated at 4°C for a few weeks and still remain viable.



Western Blotting

**Image 1.** ABIN185068 staining (1.5µg/ml) of 293 lysate (RIPA buffer, 30µg total protein per lane). Primary incubated for 1 hour. Detected by western blot using chemiluminescence.