

Datasheet for ABIN185071
anti-SIL1 antibody (C-Term)[Go to Product page](#)

1 Image

Overview

Quantity:	100 µg
Target:	SIL1
Binding Specificity:	C-Term
Reactivity:	Human
Host:	Goat
Clonality:	Polyclonal
Conjugate:	This SIL1 antibody is un-conjugated
Application:	Western Blotting (WB), ELISA, Immunohistochemistry (IHC)

Product Details

Purpose:	BAP / SIL1
Immunogen:	Peptide with sequence C-ELLGSVNSLLKELR, from the C Terminus of the protein sequence according to NP_071909.1, NP_001032722.1.
Sequence:	ELLGSVNSLL KELR
Isotype:	IgG
Specificity:	Variants (NP_071909.1, NP_001032722.1) encode the same isoform.
Cross-Reactivity:	Human
Purification:	Purified from goat serum by ammonium sulphate precipitation followed by antigen affinity chromatography using the immunizing peptide.
Grade:	Verified

Target Details

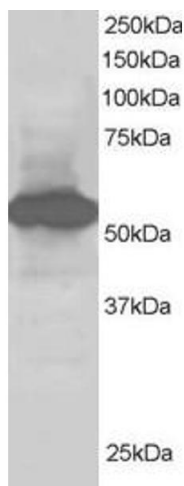
Target:	SIL1
Alternative Name:	SIL1 (SIL1 Products)
Background:	SIL1, BAP, endoplasmic reticulum chaperone SIL1, homolog of yeast, BiP-associated protein, SIL1 homolog, endoplasmic reticulum chaperone (<i>S. cerevisiae</i>), MSS, ULG5, SIL1 protein
Gene ID:	64374
NCBI Accession:	NP_071909 , NP_001032722
Pathways:	Unfolded Protein Response , SARS-CoV-2 Protein Interactome

Application Details

Application Notes:	Immunohistochemistry: Paraffin embedded Human Liver and Testis. Recommended concentration: 5 µg/mL. Western Blot: Approx 55-60 kDa band observed in Human Liver and Kidney extracts (predicted MW of 53 kDa according to NP_071909.1). Recommended concentration: 1-2 µg/mL. Peptide ELISA: antibody detection limit dilution 1:8000.
Restrictions:	For Research Use only

Handling

Format:	Liquid
Concentration:	0.5 mg/mL
Buffer:	Supplied at 0.5 mg/mL in Tris saline, 0.02 % sodium azide, pH 7.3 with 0.5 % bovine serum albumin.
Preservative:	Sodium azide
Precaution of Use:	This product contains Sodium azide: a POISONOUS AND HAZARDOUS SUBSTANCE which should be handled by trained staff only.
Handling Advice:	Minimize freezing and thawing.
Storage:	-20 °C
Storage Comment:	Aliquot and store at -20°C, with minimal freeze/thawing. A working aliquot may be refrigerated at 4°C for a few weeks and still remain viable.



Western Blotting

Image 1. ABIN185071 staining (1 μ g/ml) of Human Kidney lysate (RIPA buffer, 30 μ g total protein per lane). Primary incubated for 1 hour. Detected by western blot using chemiluminescence.